

# Assoziationen zum Wellenfliegen...

Transponder-Freigabe

Kälte

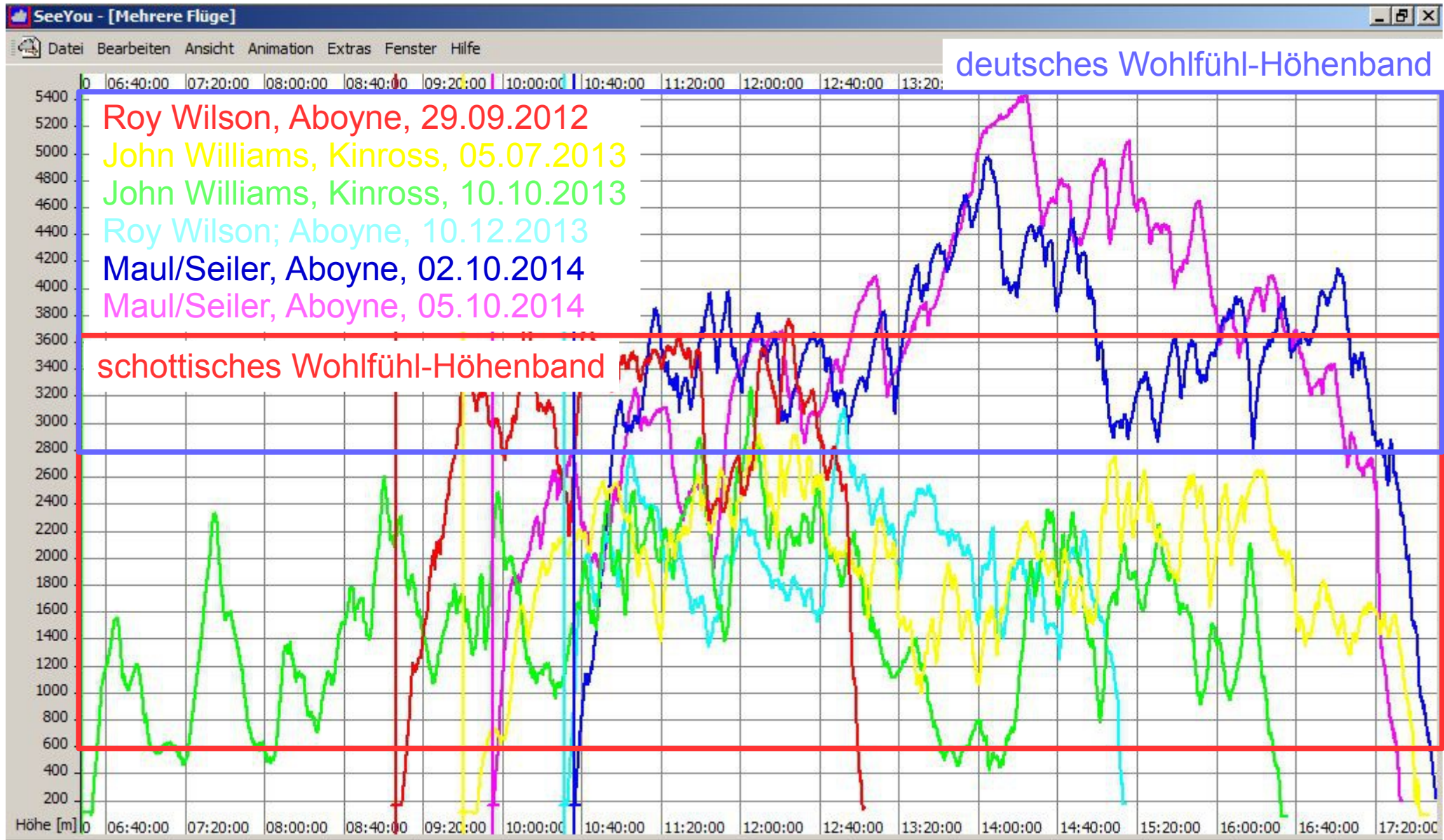
Sauerstoffmangel

Vereisung

Wellenfenster

...muss das sein?

# Aha-Erlebnis 1

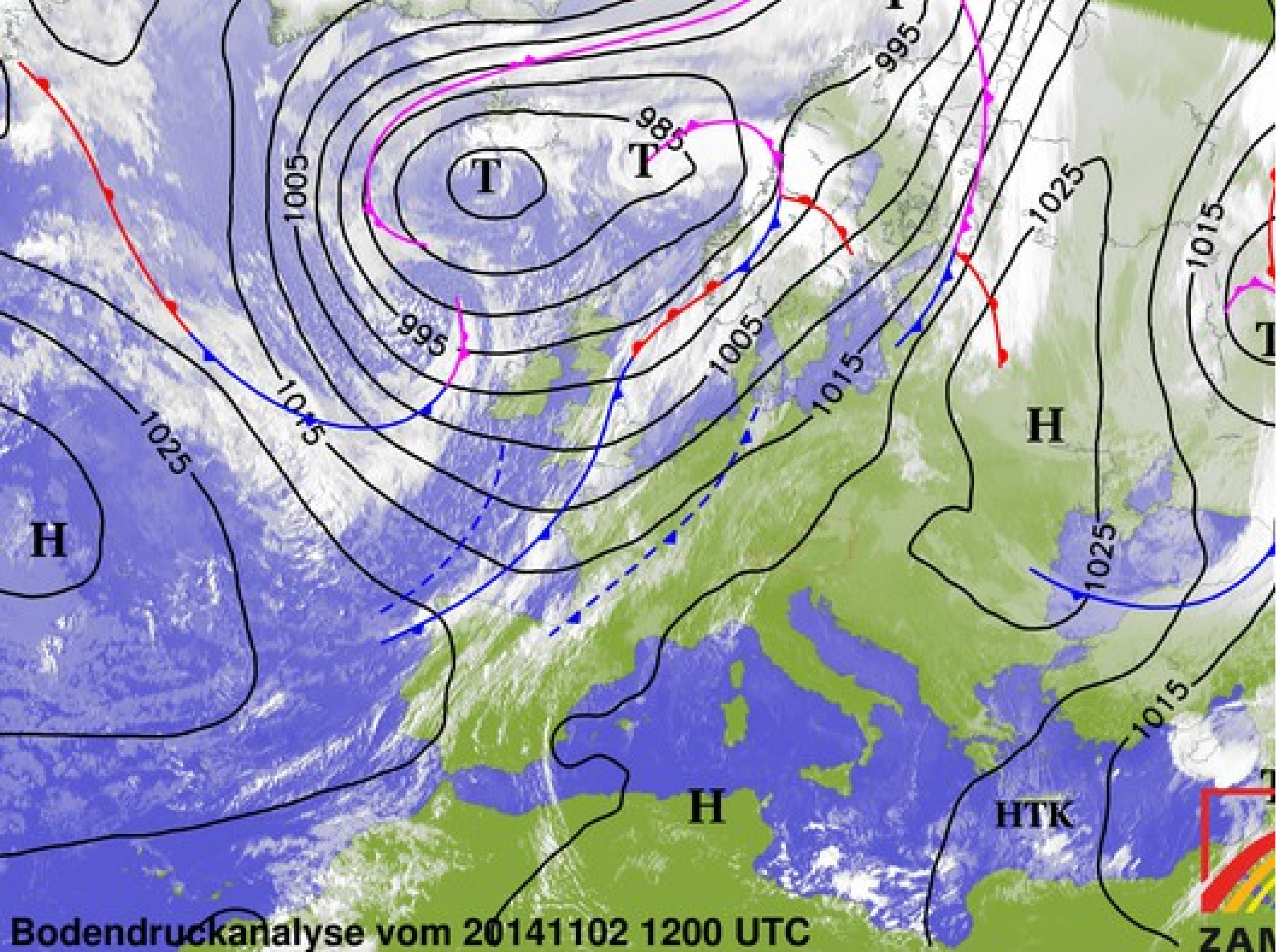


An aerial photograph showing a sailboat with a white hull and a sail with red and blue stripes on a large body of water. In the background, a prominent mountain peak rises above a layer of low-lying clouds. The sky is a pale, hazy blue.

## Aha-Erlebnis 2

**Werra Low Level, 2.11.14**

Torsten Linstädt / Christof Maul, Arcus T

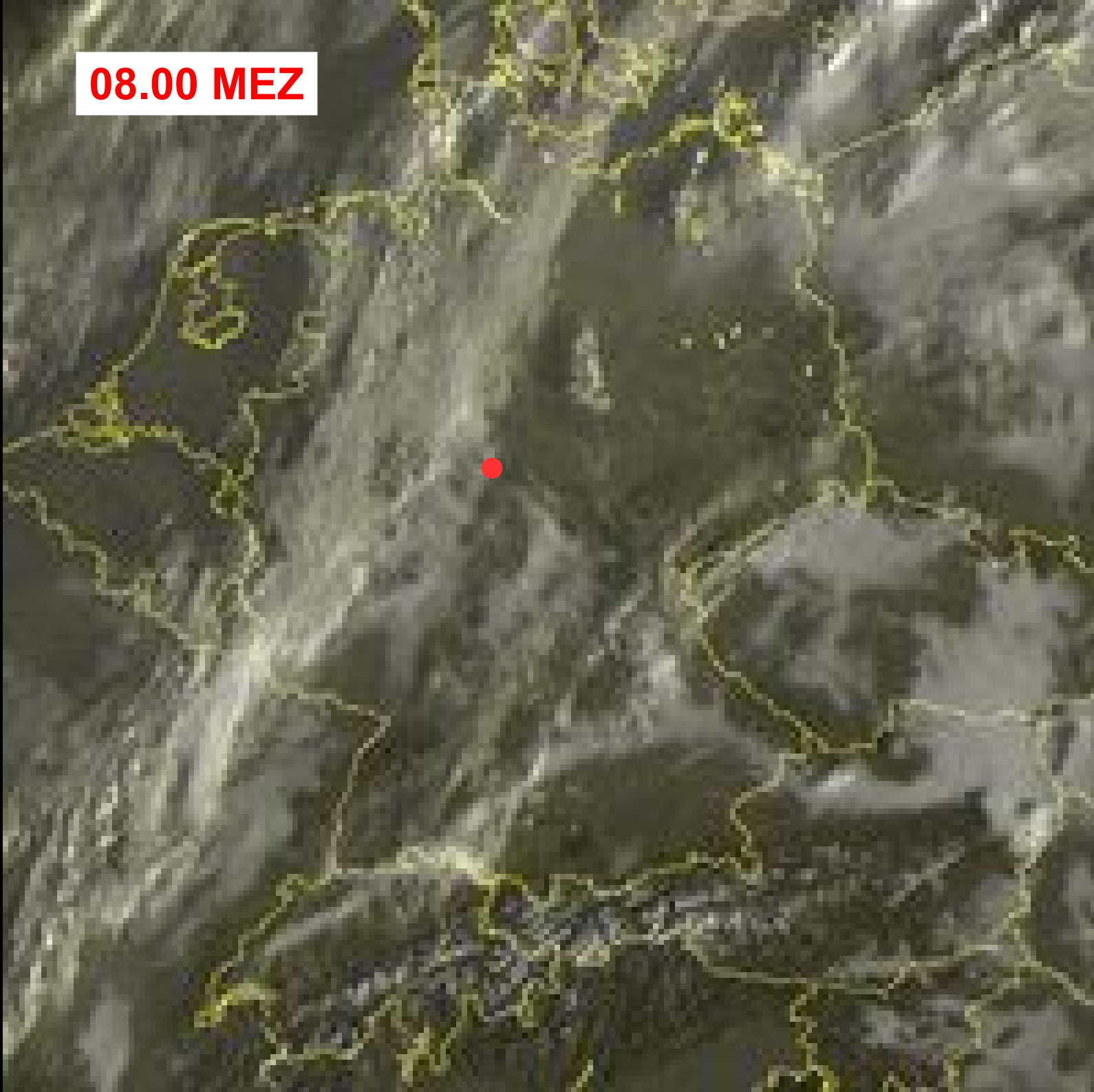


Bodendruckanalyse vom 20141102 1200 UTC

ZAM

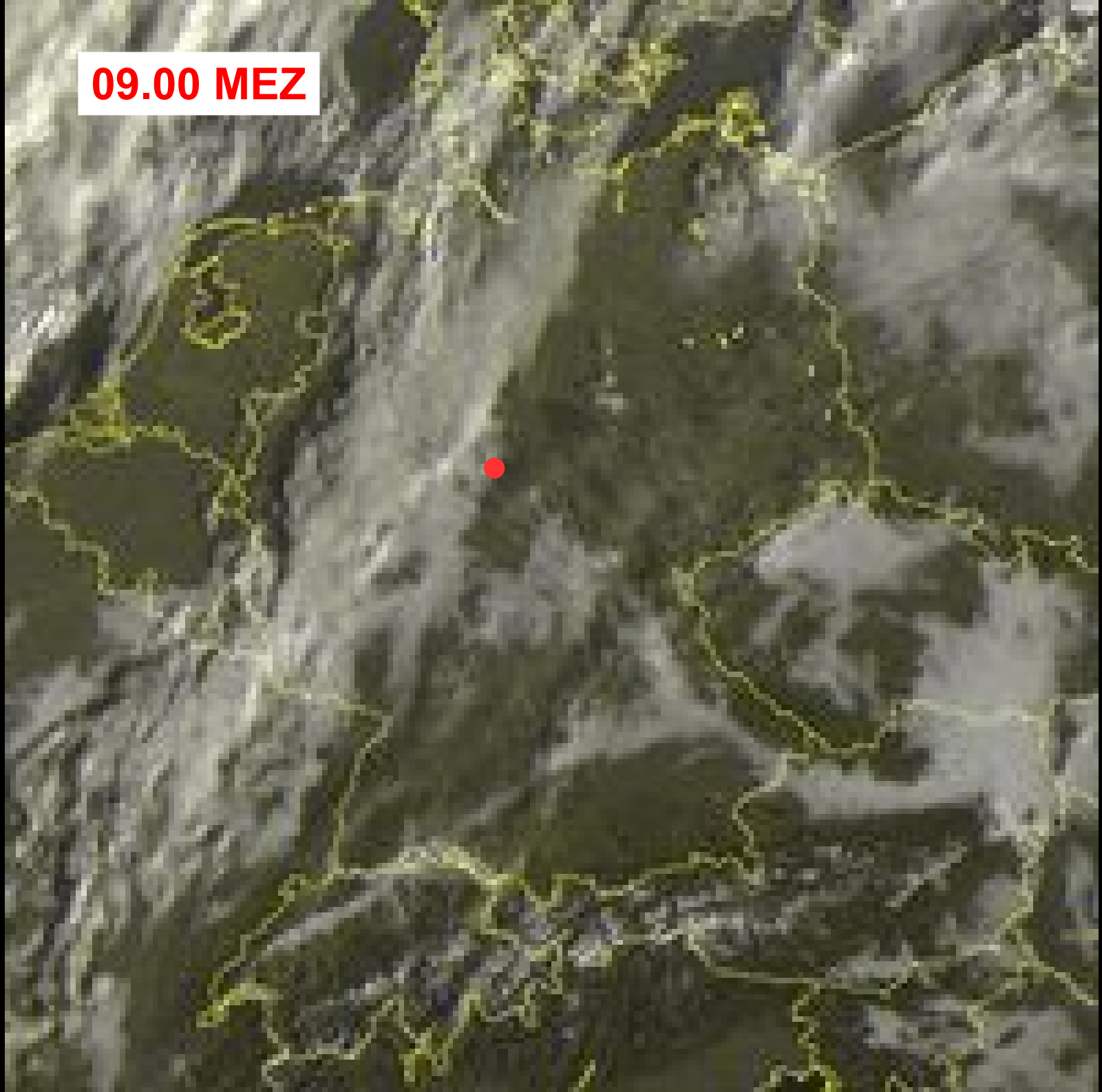


**08.00 MEZ**

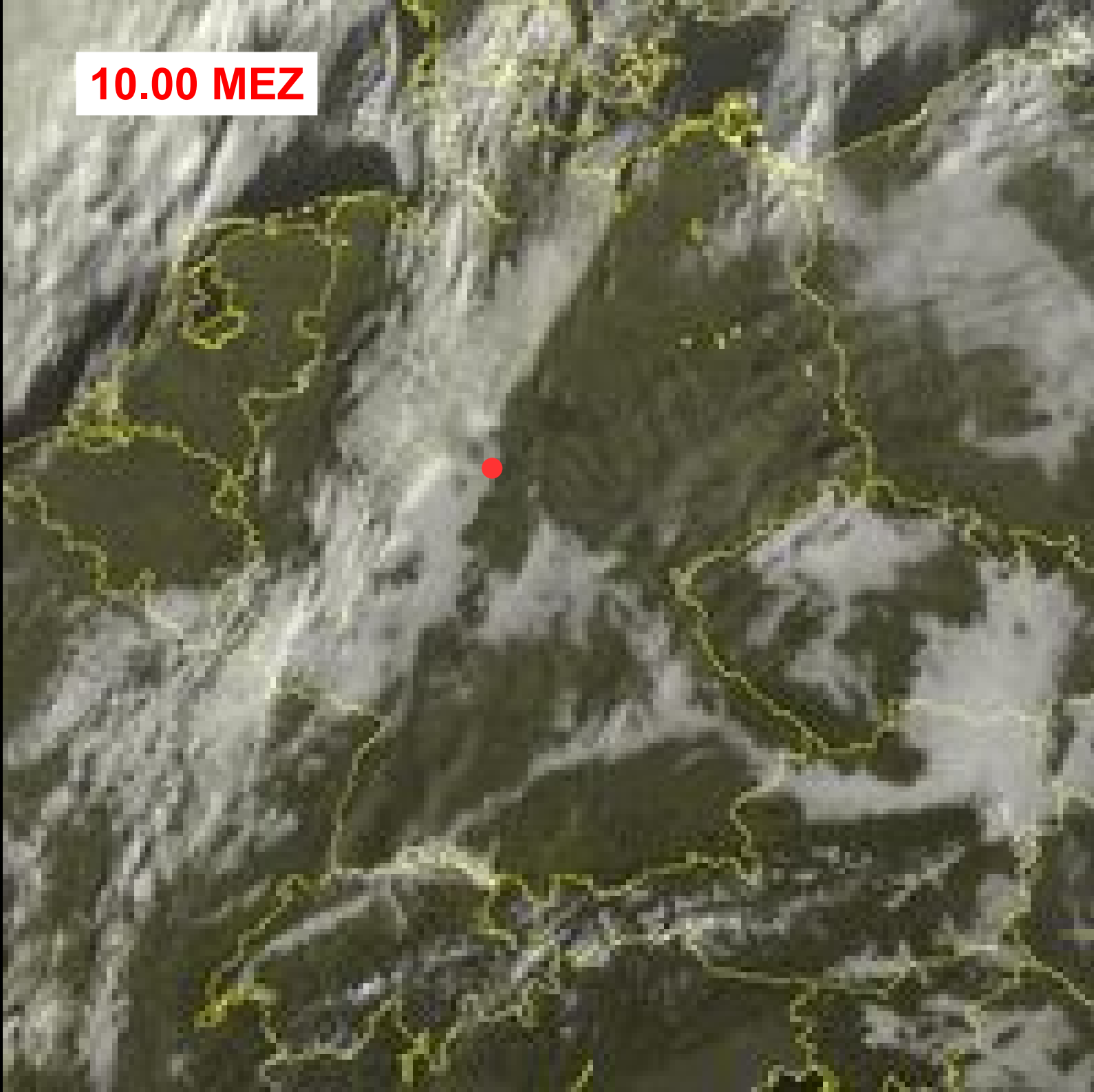


**09.00 MEZ**

Mittelgebirgs-Leewellentreffen, 21.2.2015, Hannover, Christof Maul, Akaflieg Frankfurt



**10.00 MEZ**





**11.00 MEZ**



**12.00 MEZ**

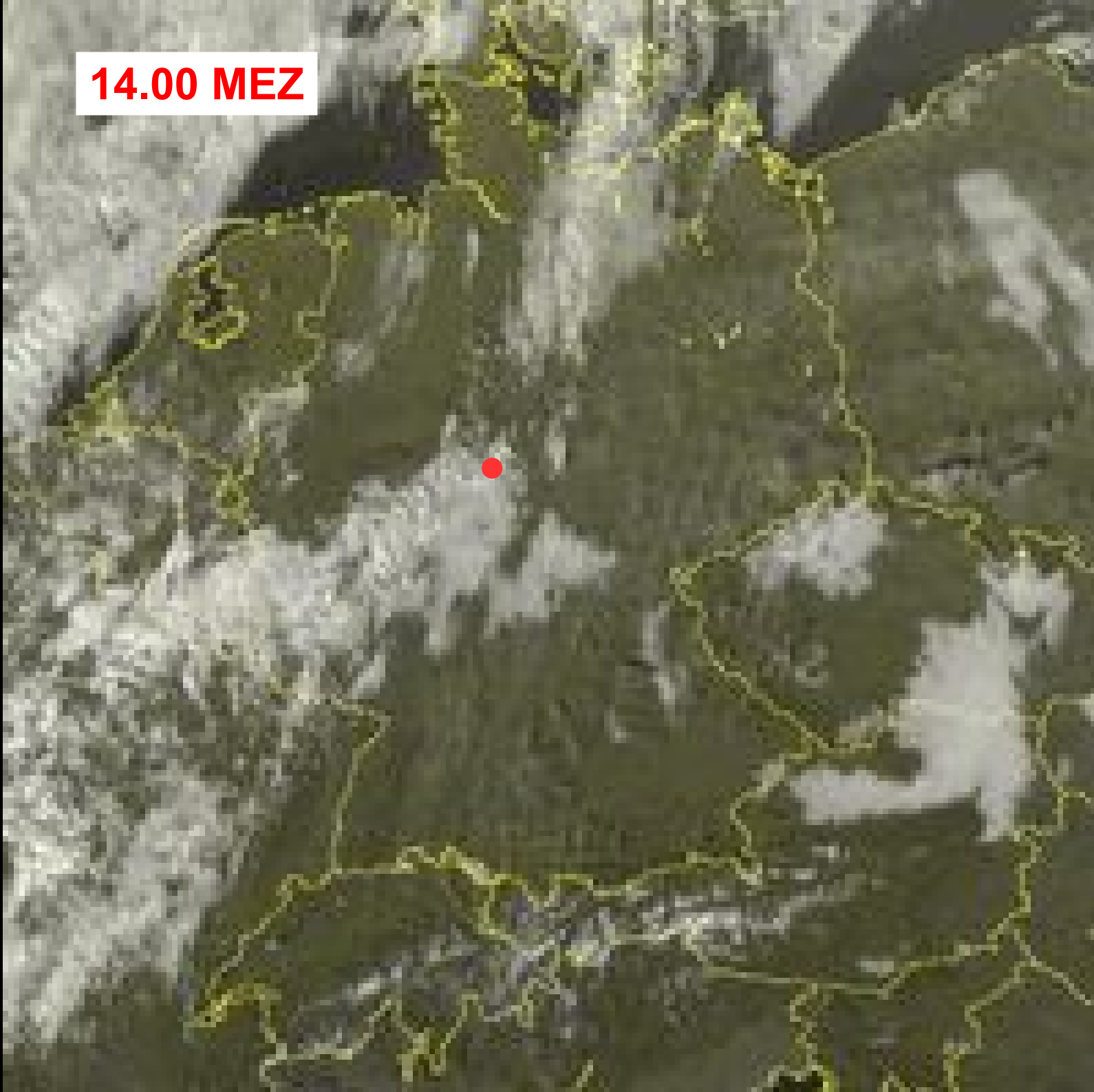


**13.00 MEZ**

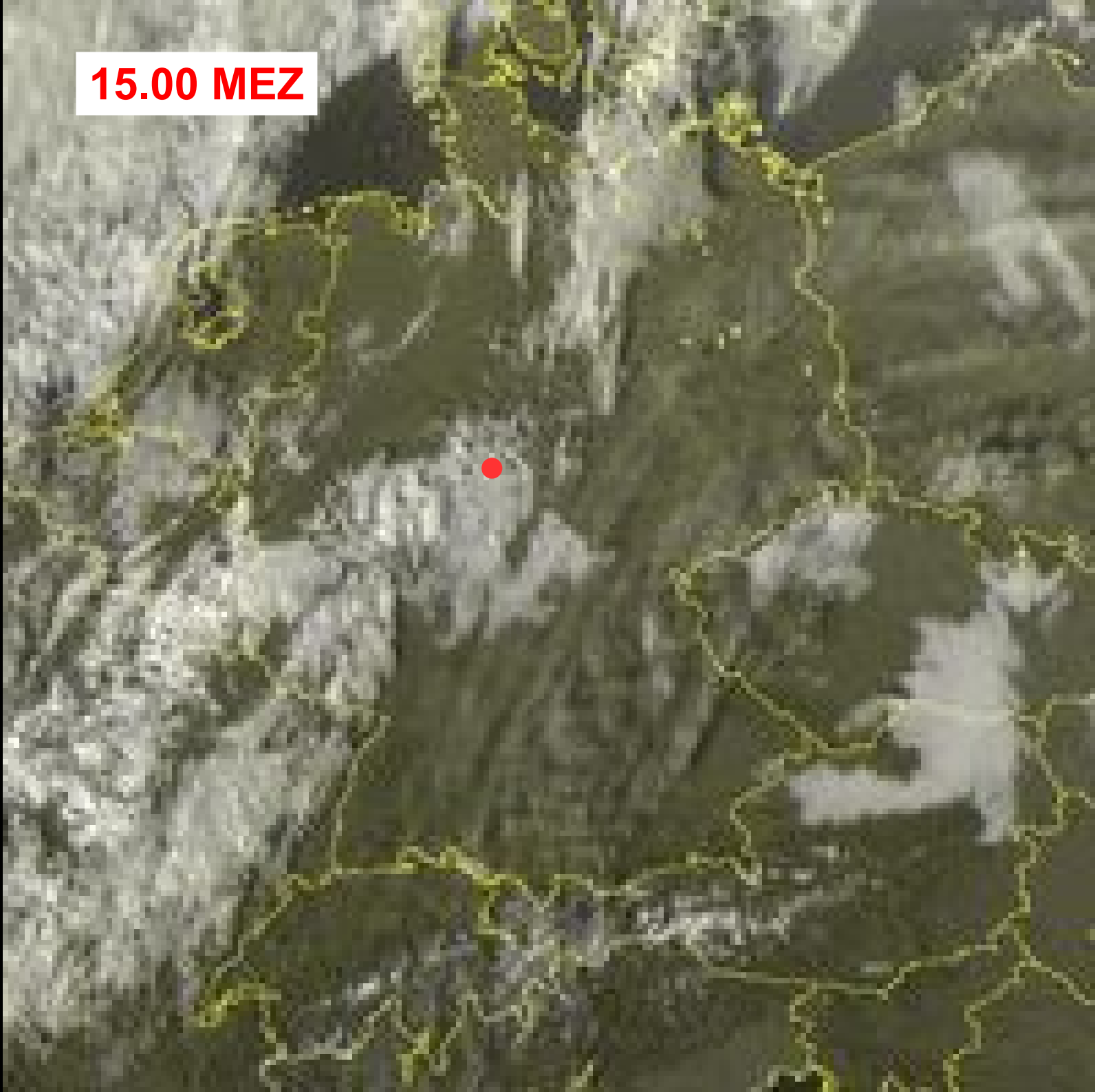
Mittelgebirgs-Leewellentreffen, 21.2.2015, Hannover, Christof Maul, Akaflieg Frankfurt



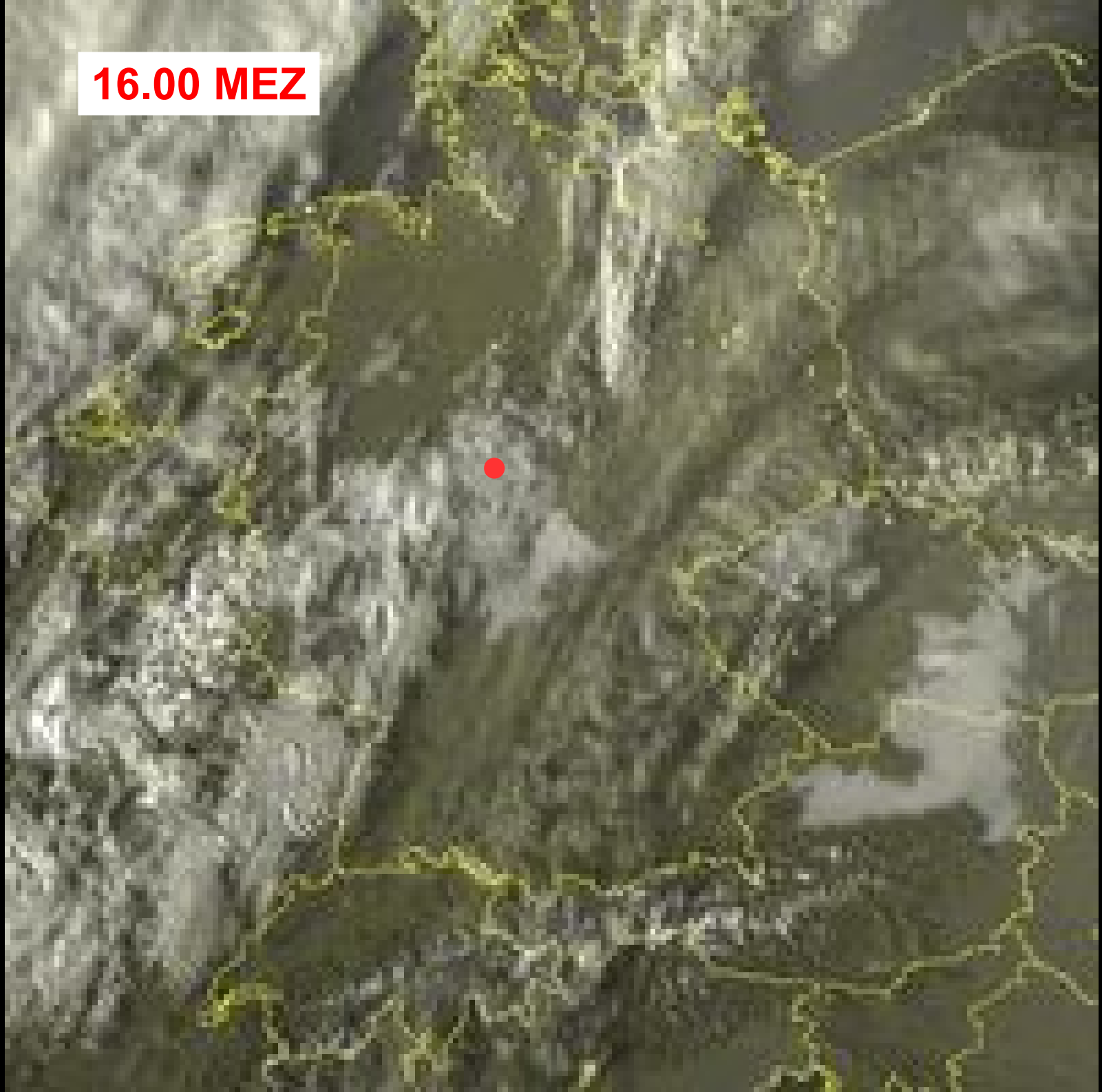
**14.00 MEZ**



**15.00 MEZ**



**16.00 MEZ**







Kassel

Göttingen

Nordhausen

Eisenach

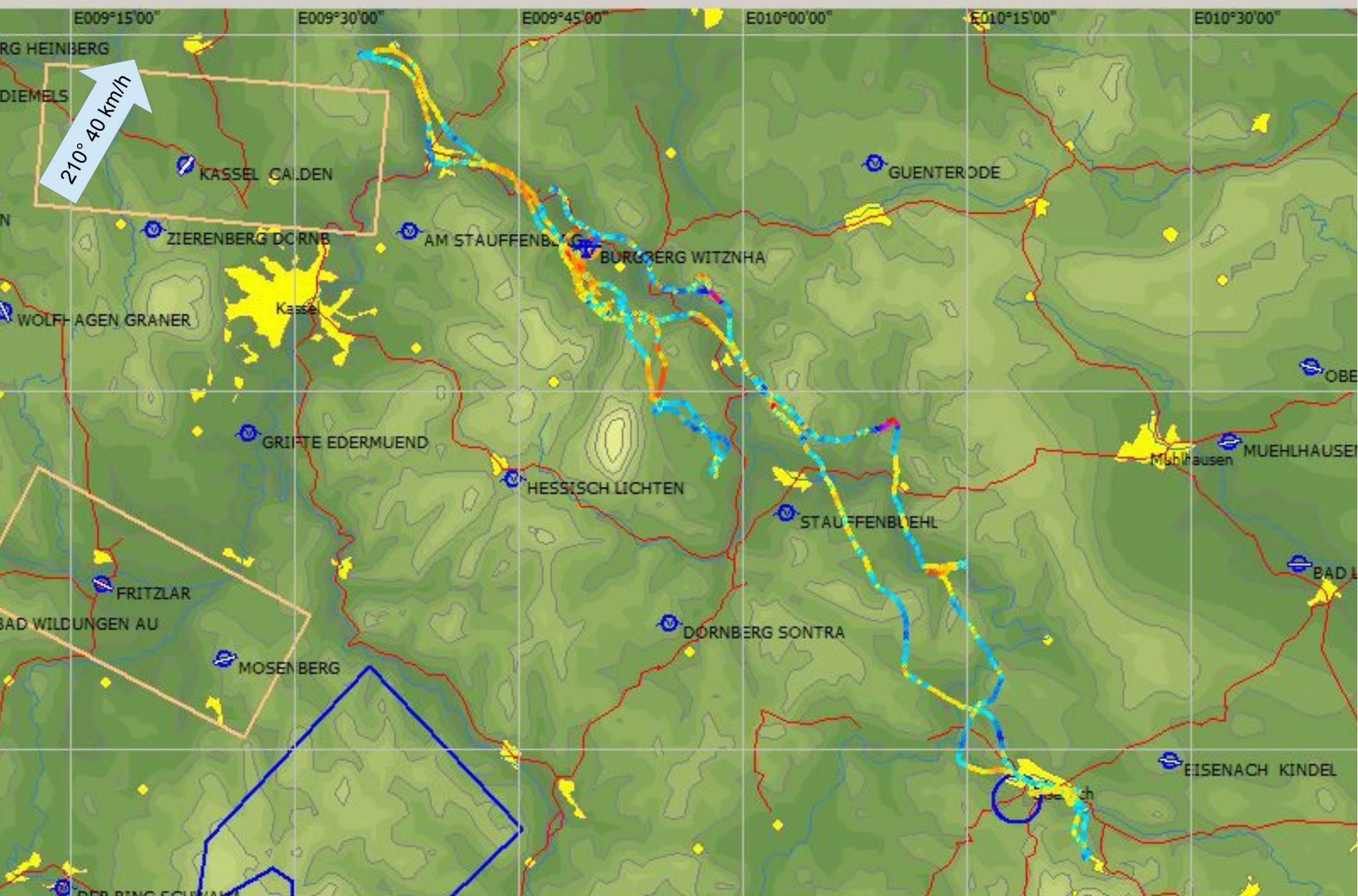
Gotha

Bad Hersfeld

30 km

© 2009 GeoBasis-DE/BKG  
© 2014 Google  
Image Landsat



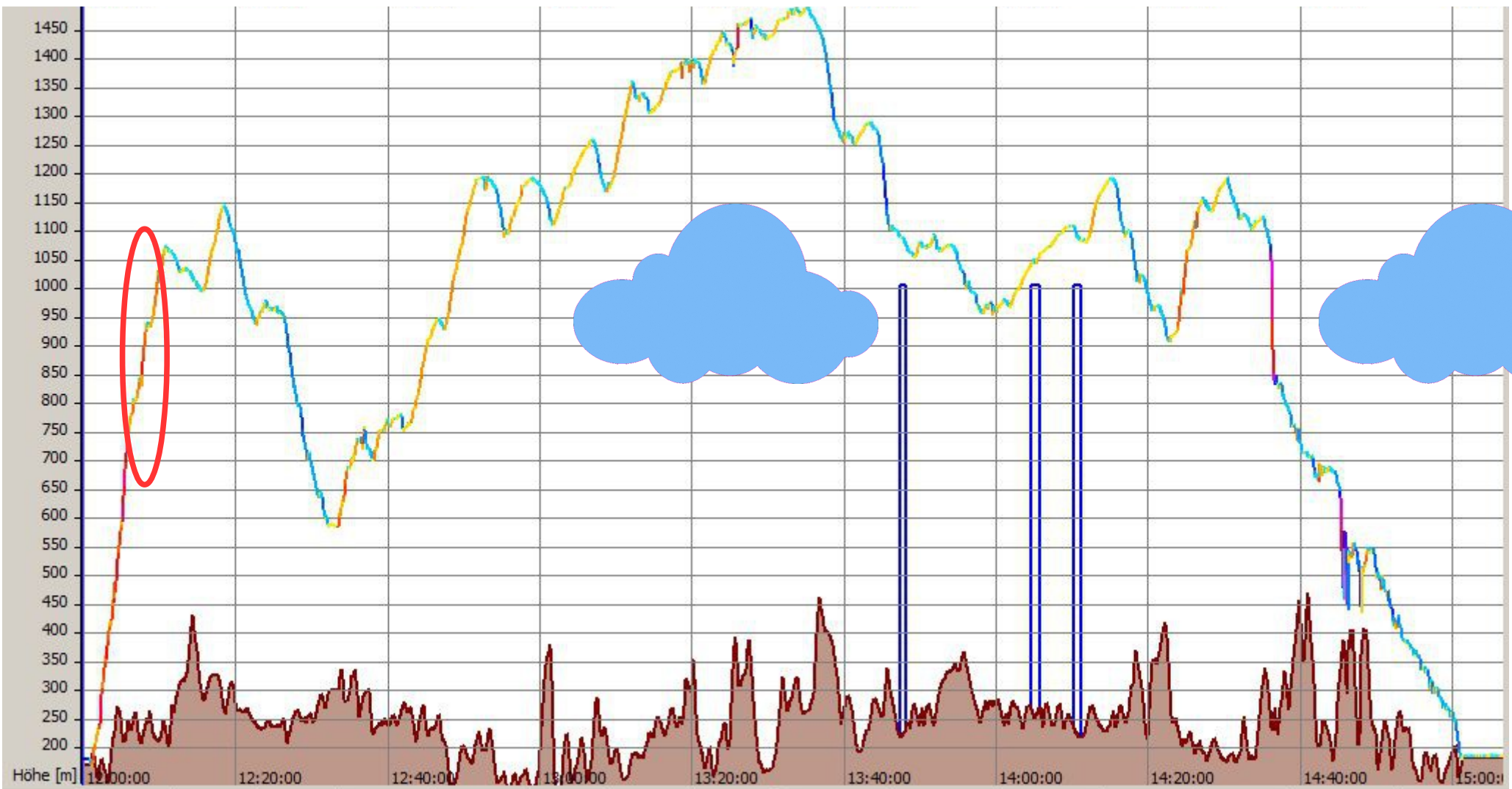


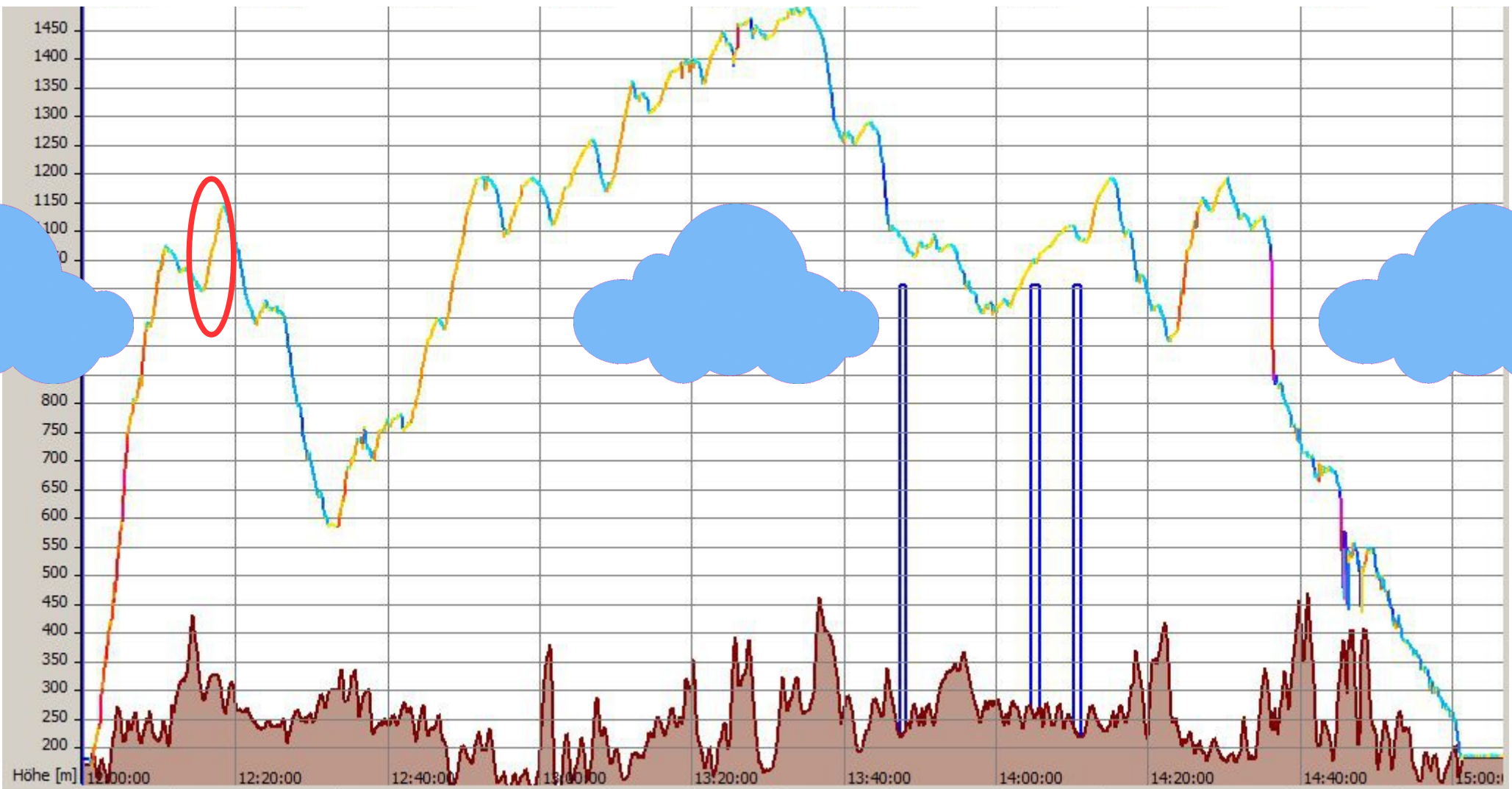






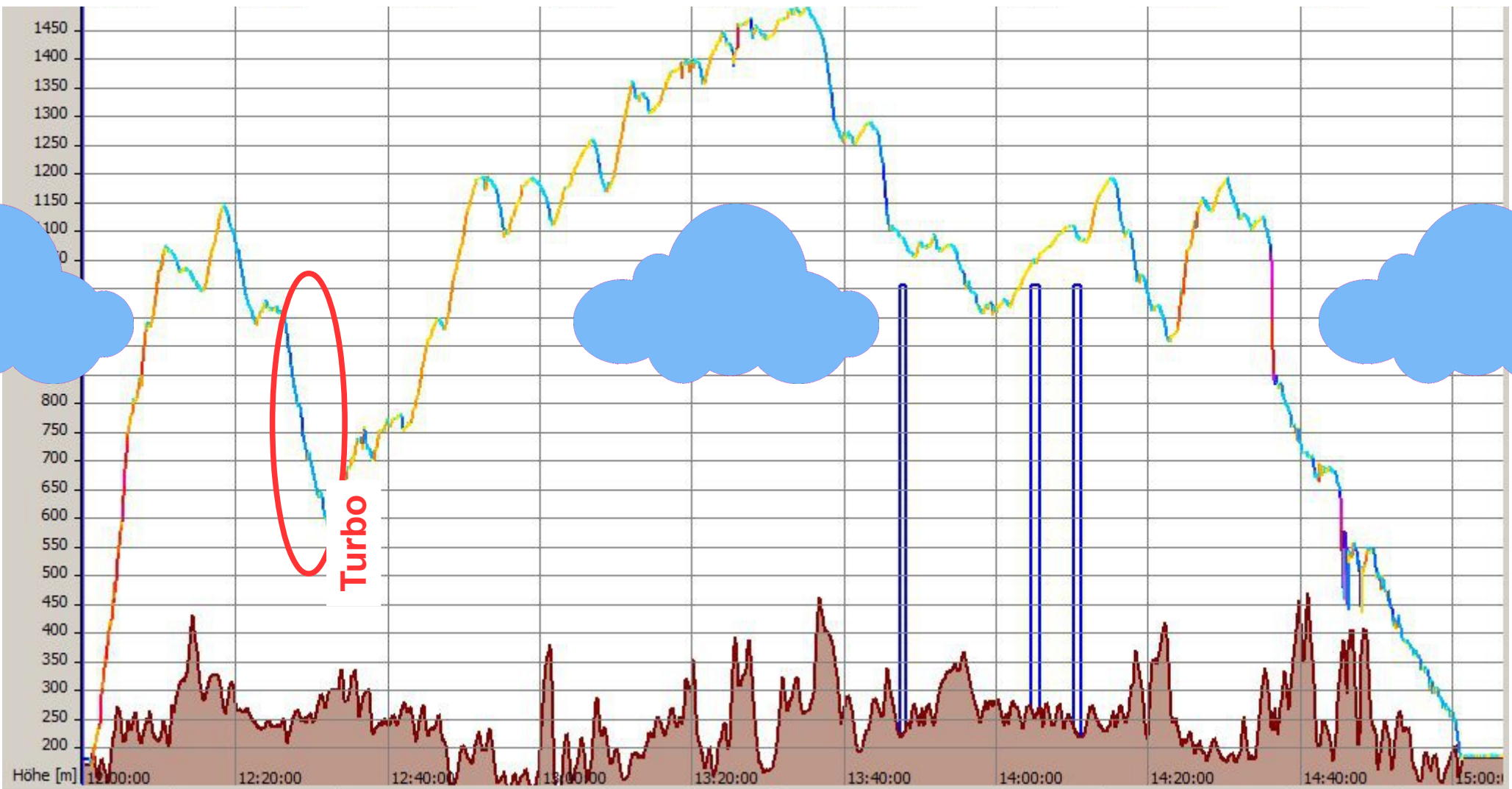


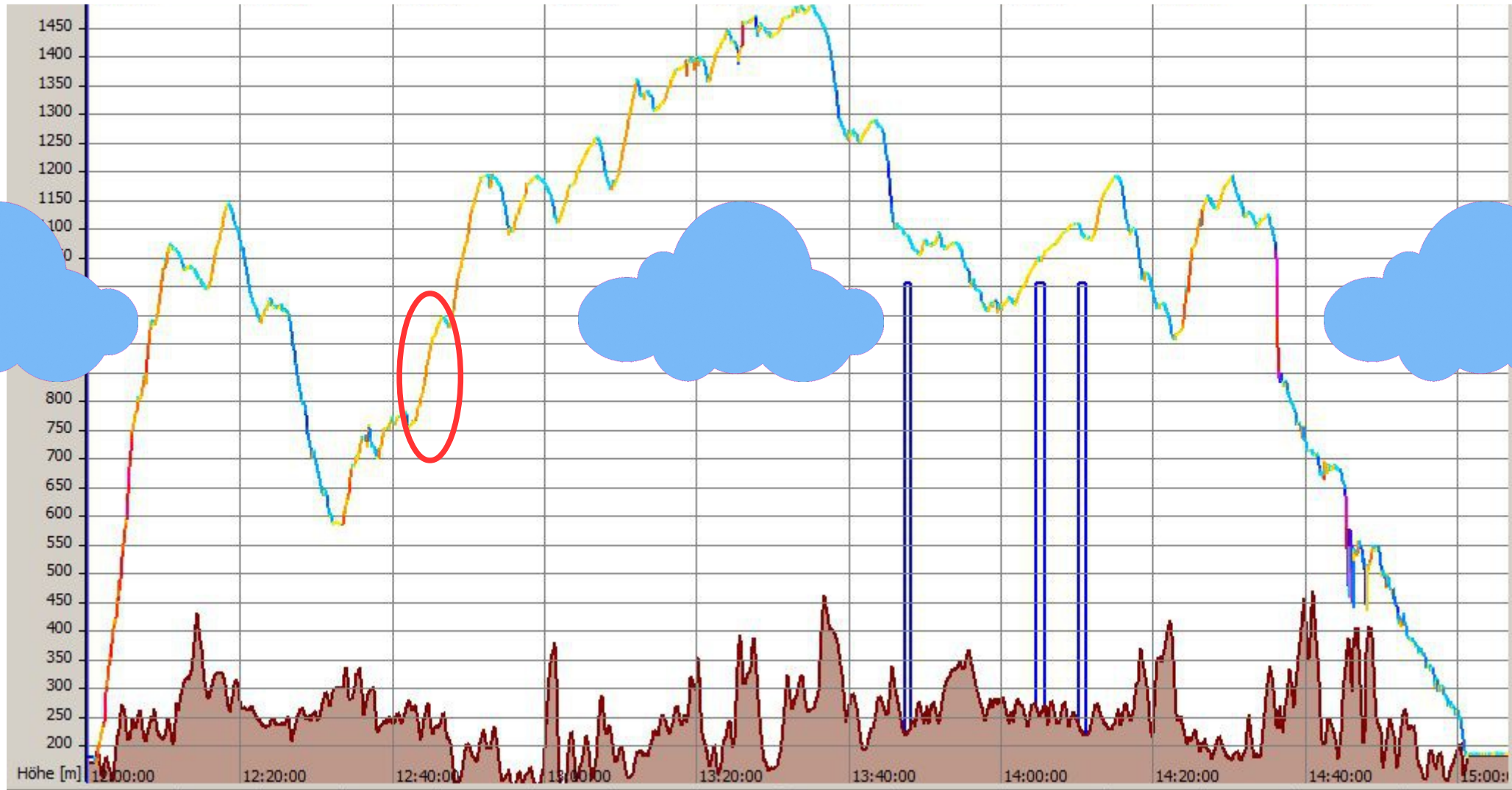




Mittelgebirgs-Leewellentreffen, 21.2.2015, Hannover, Christof Maul, Akaflieg Frankfurt

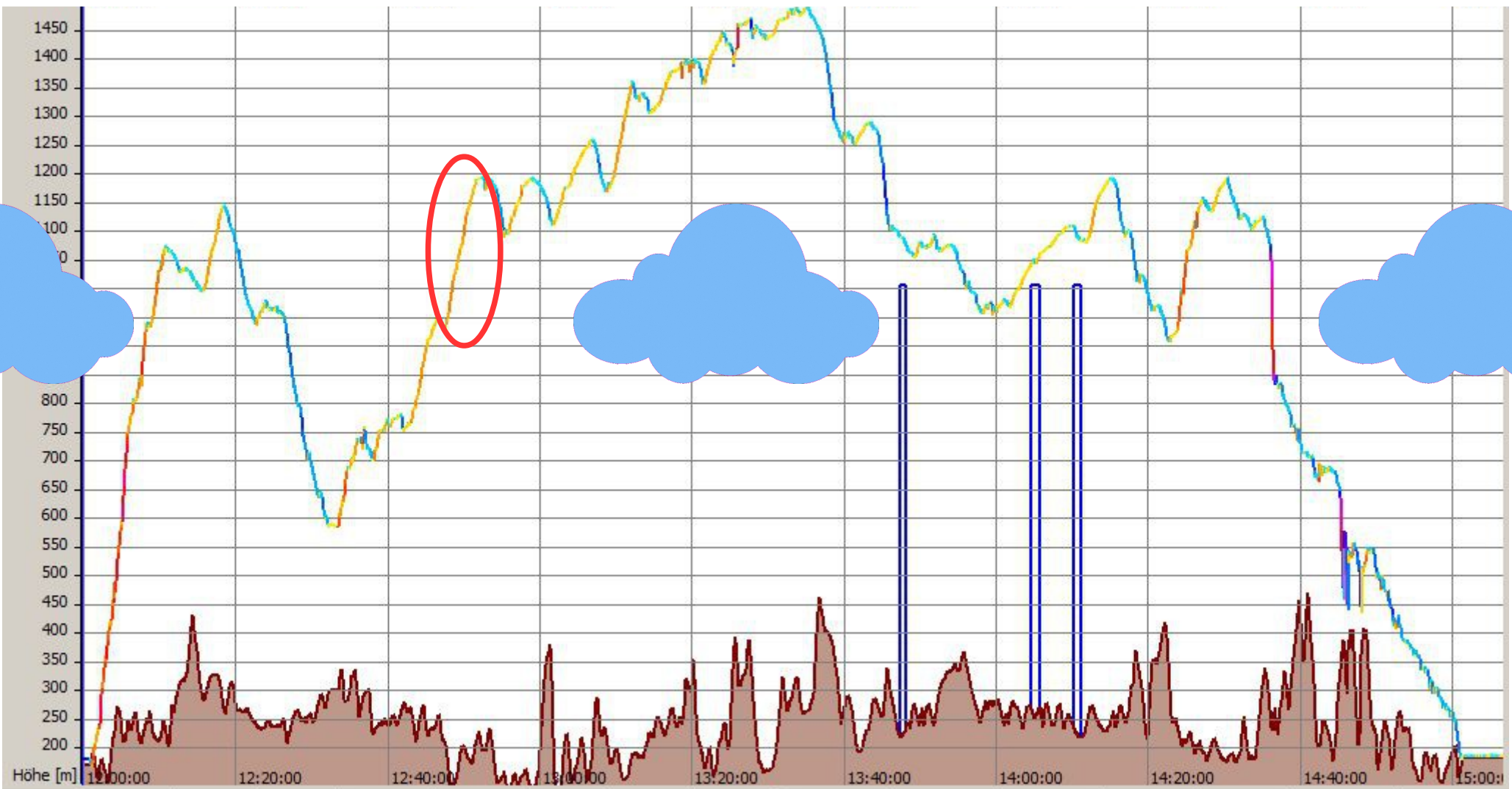
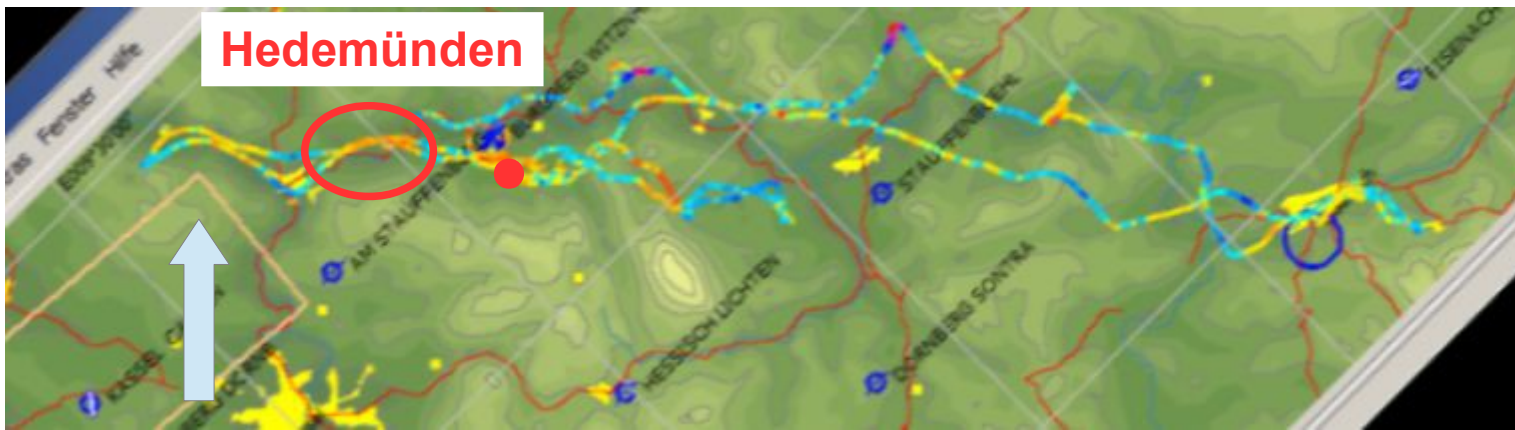




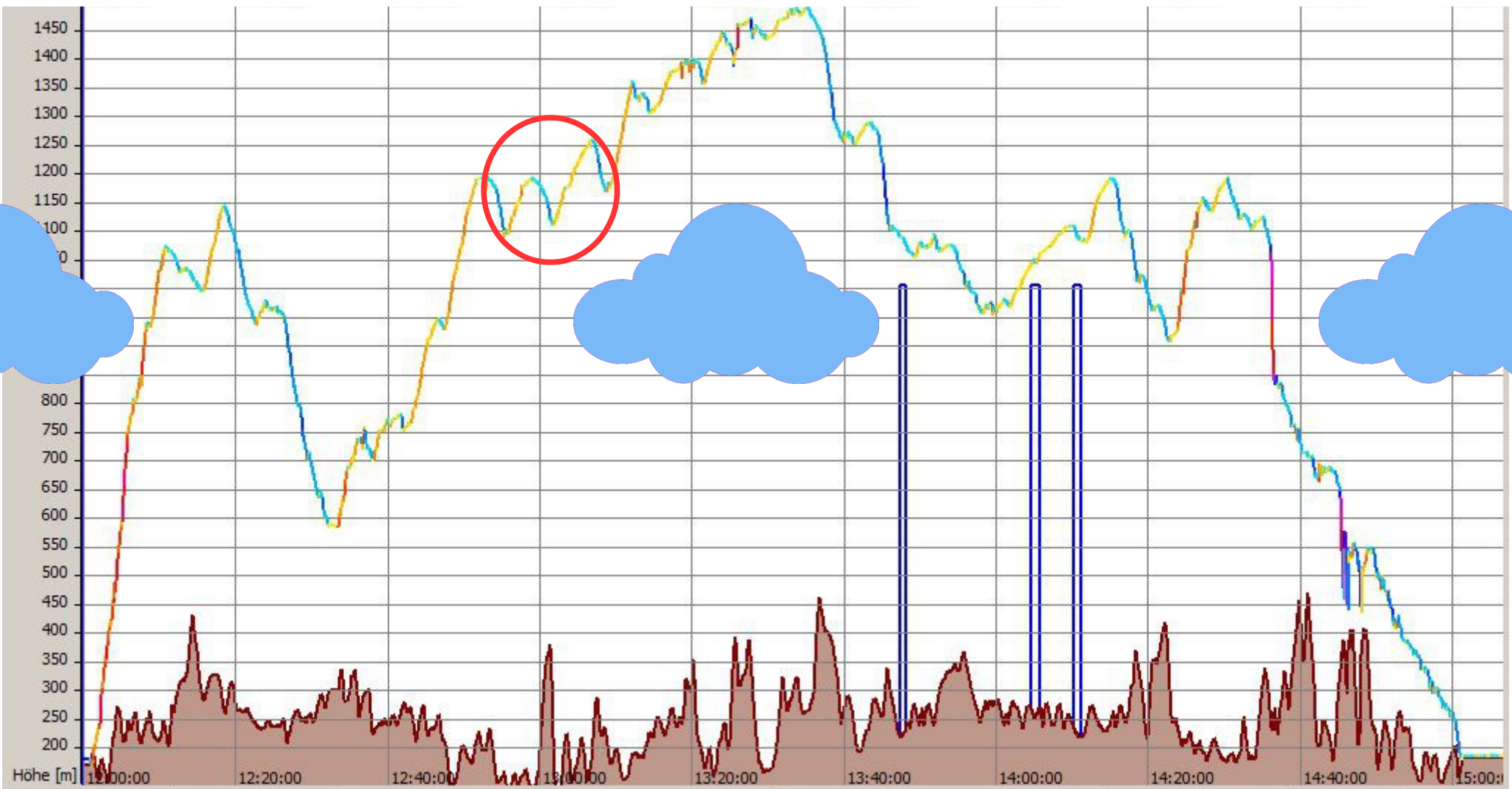
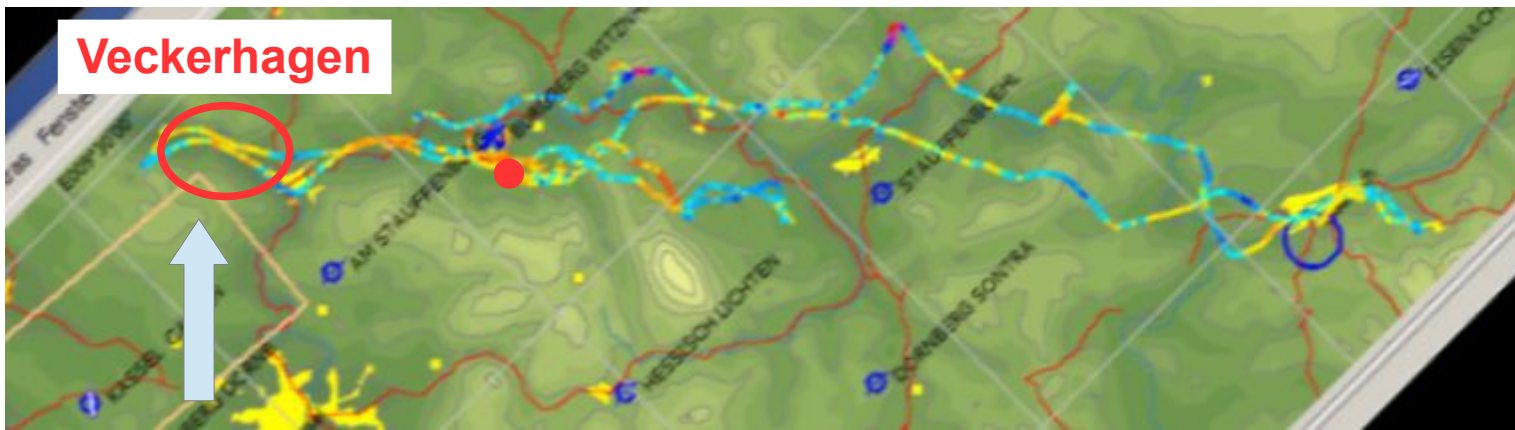


Mittelgebirgs-Leewellentreffen, 21.2.2015, Hannover, Christof Maul, Akaflieg Frankfurt



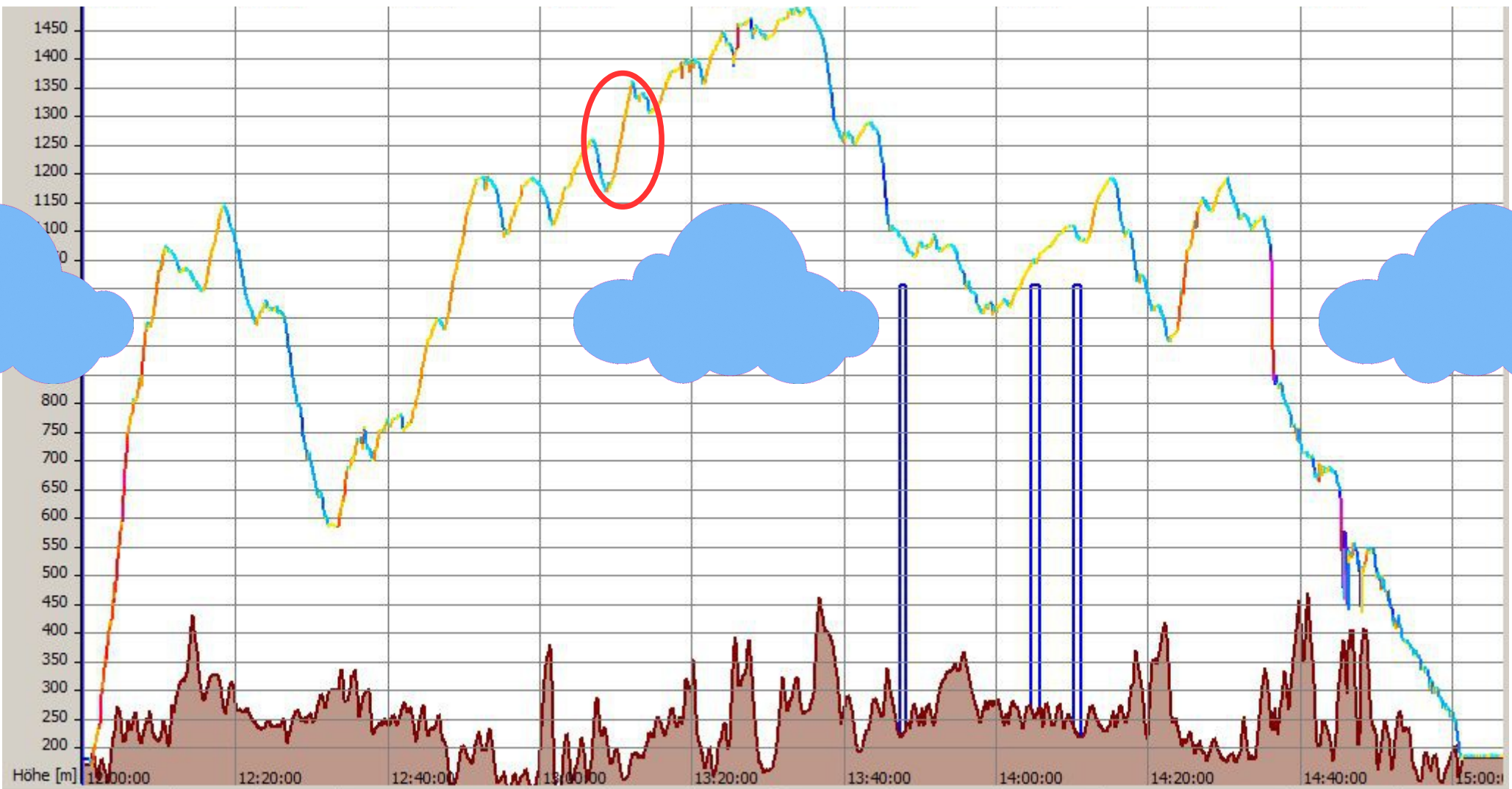
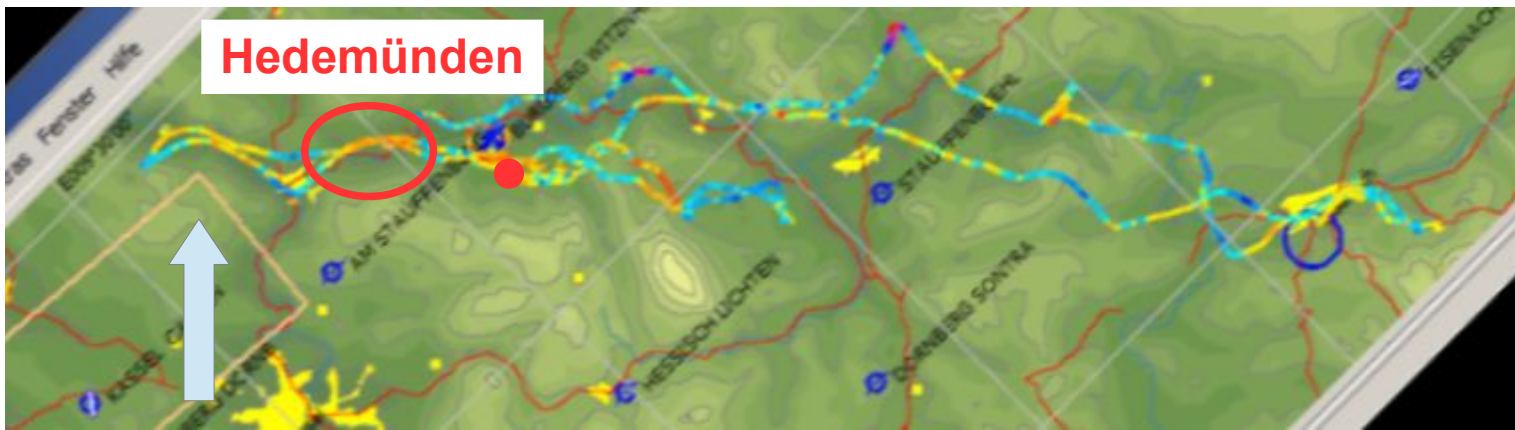


Mittelgebirgs-Leewellentreffen, 21.2.2015, Hannover, Christof Maul, Akaflieg Frankfurt



Mittelgebirgs-Leewellentreffen, 21.2.2015, Hannover, Christof Maul, Akaflieg Frankfurt



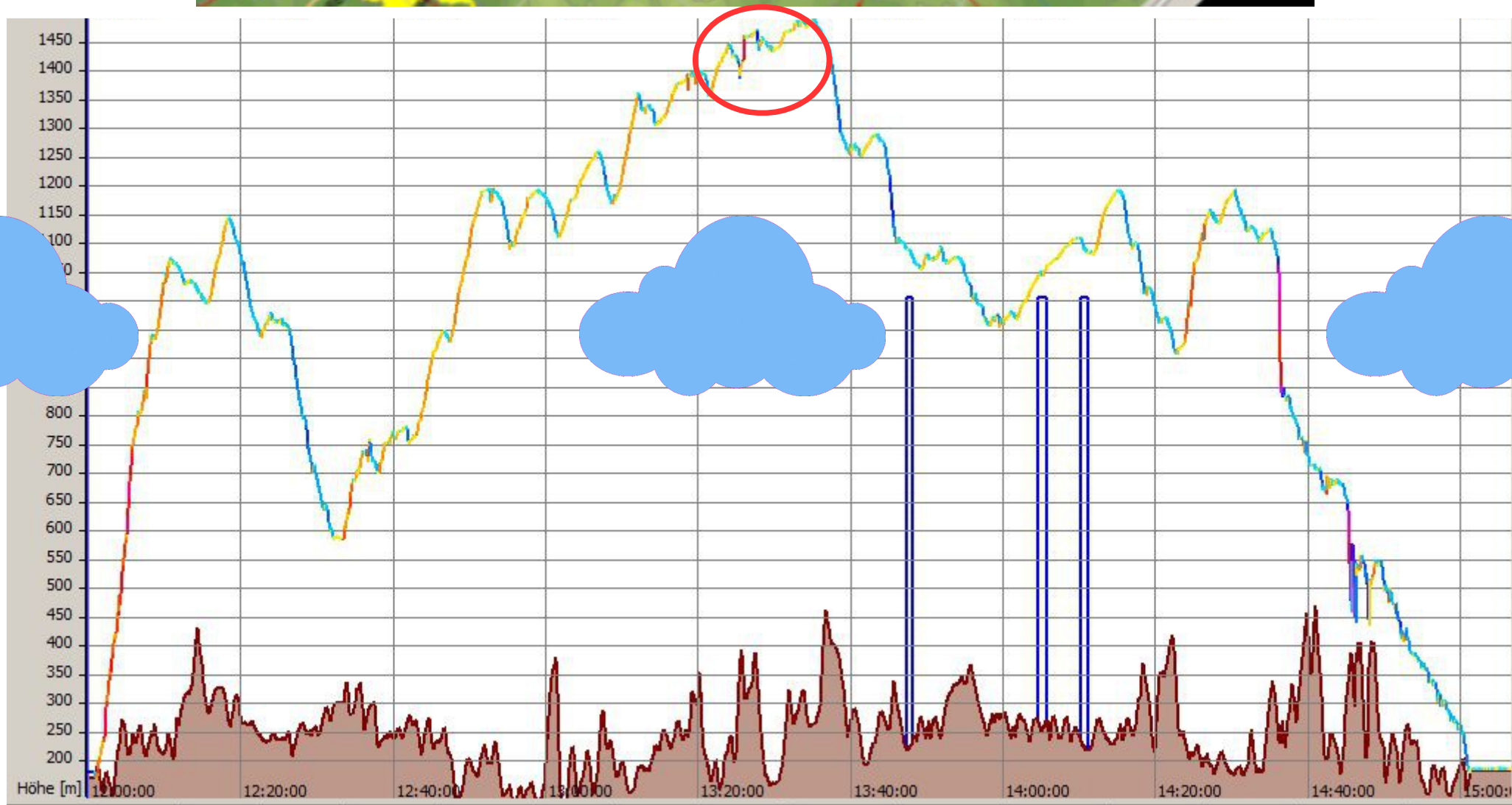


Mittelgebirgs-Leewellentreffen, 21.2.2015, Hannover, Christof Maul, Akaflieg Frankfurt

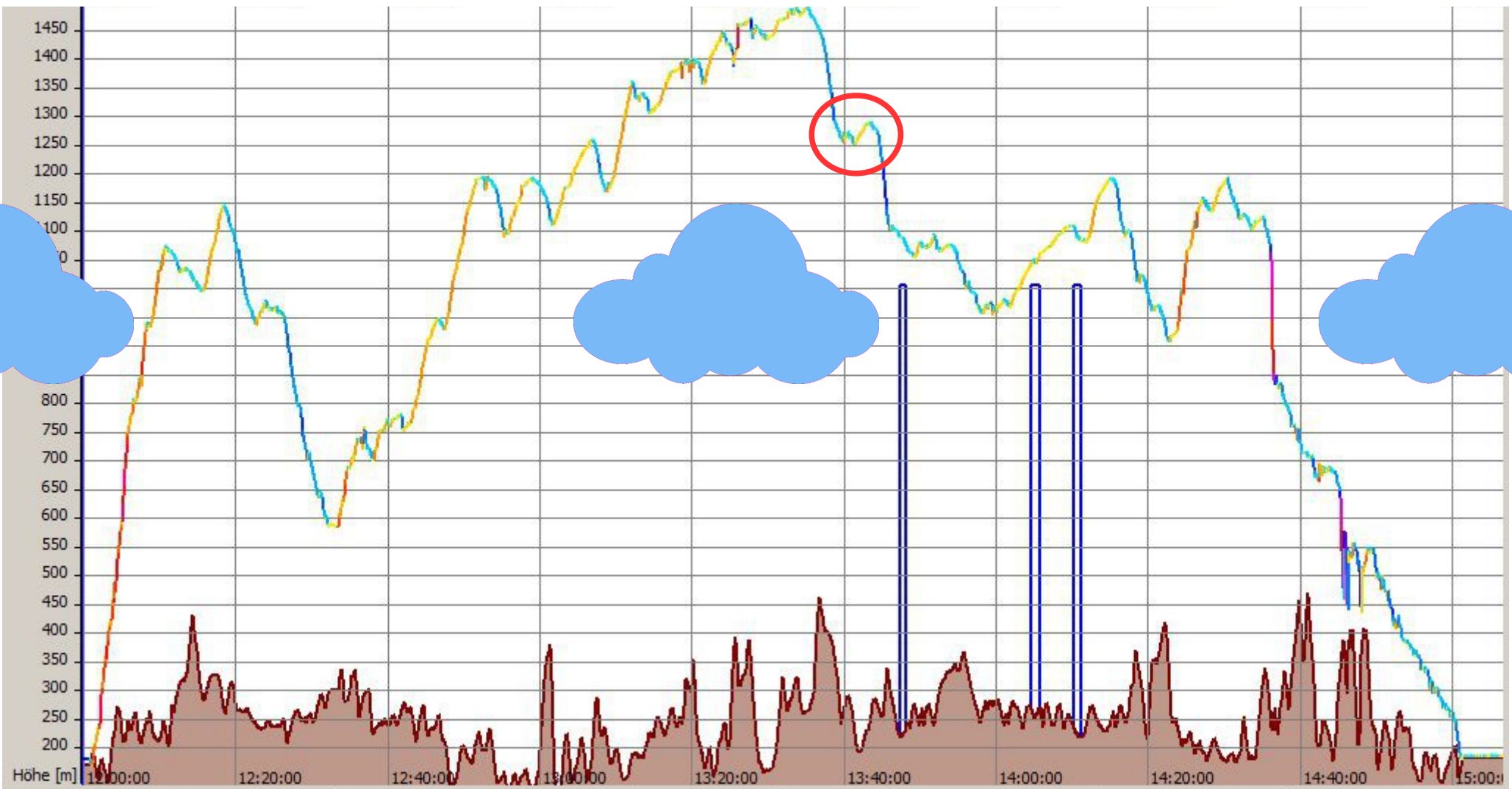
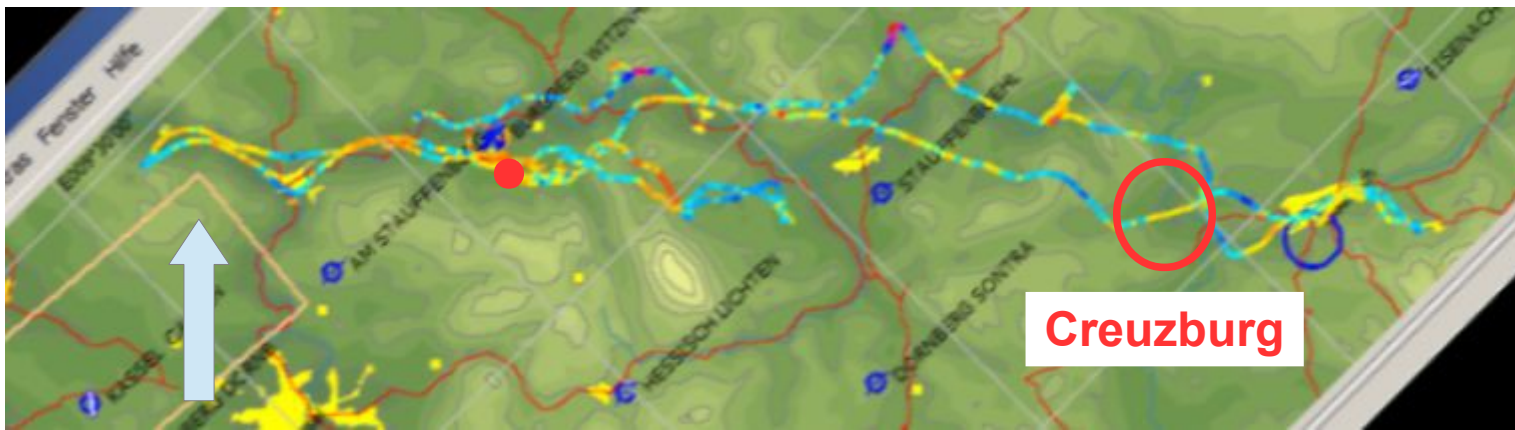
# Bad Sooden-Allendorf



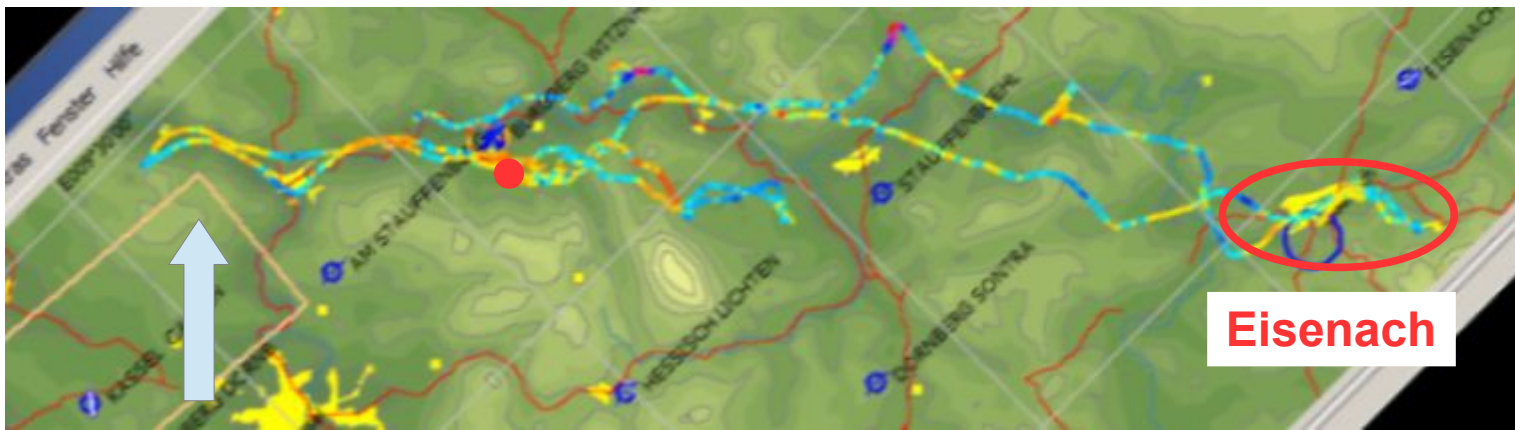
Eschwege (Lee)



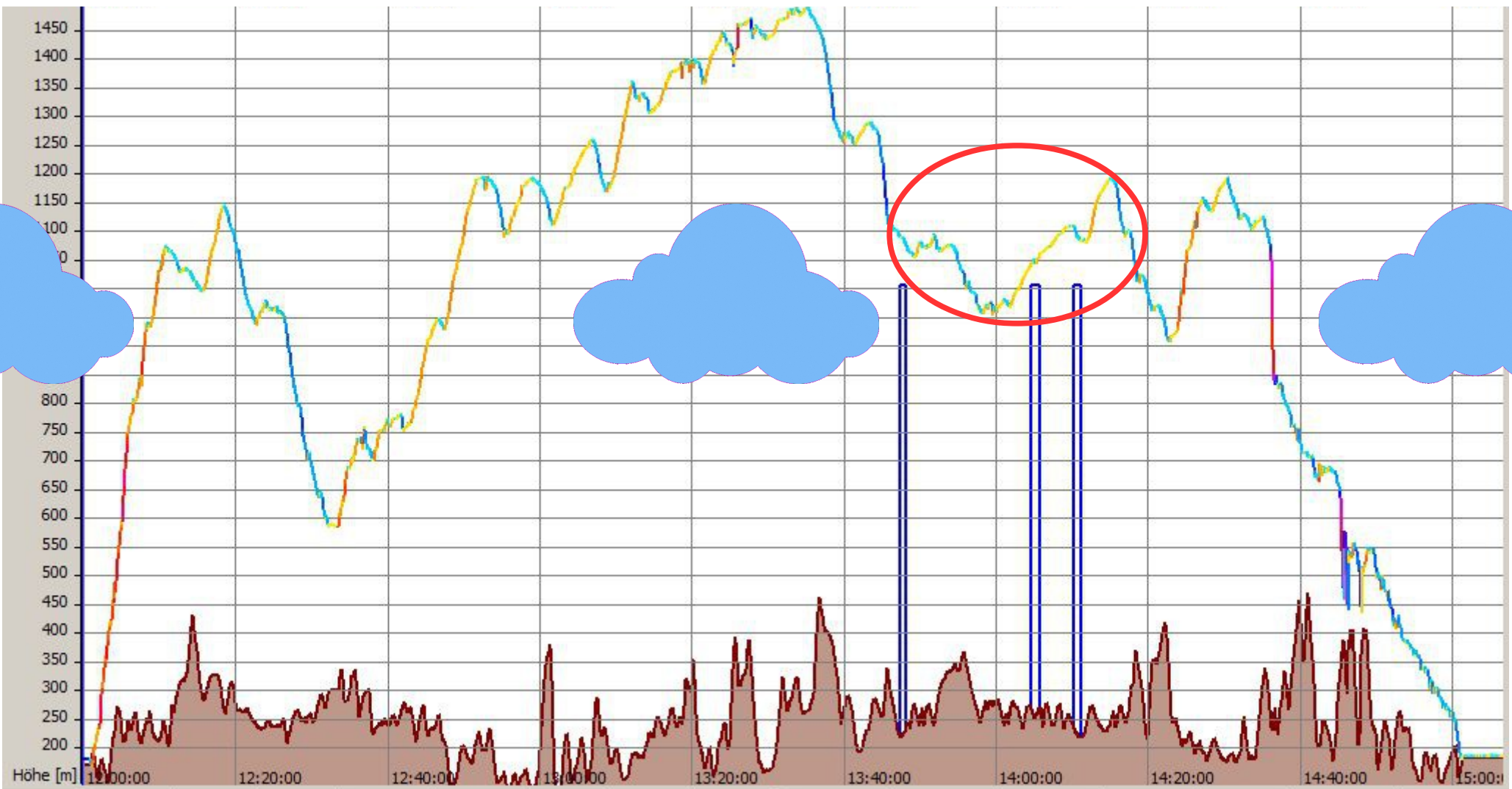




Mittelgebirgs-Leewellentreffen, 21.2.2015, Hannover, Christof Maul, Akaflieg Frankfurt

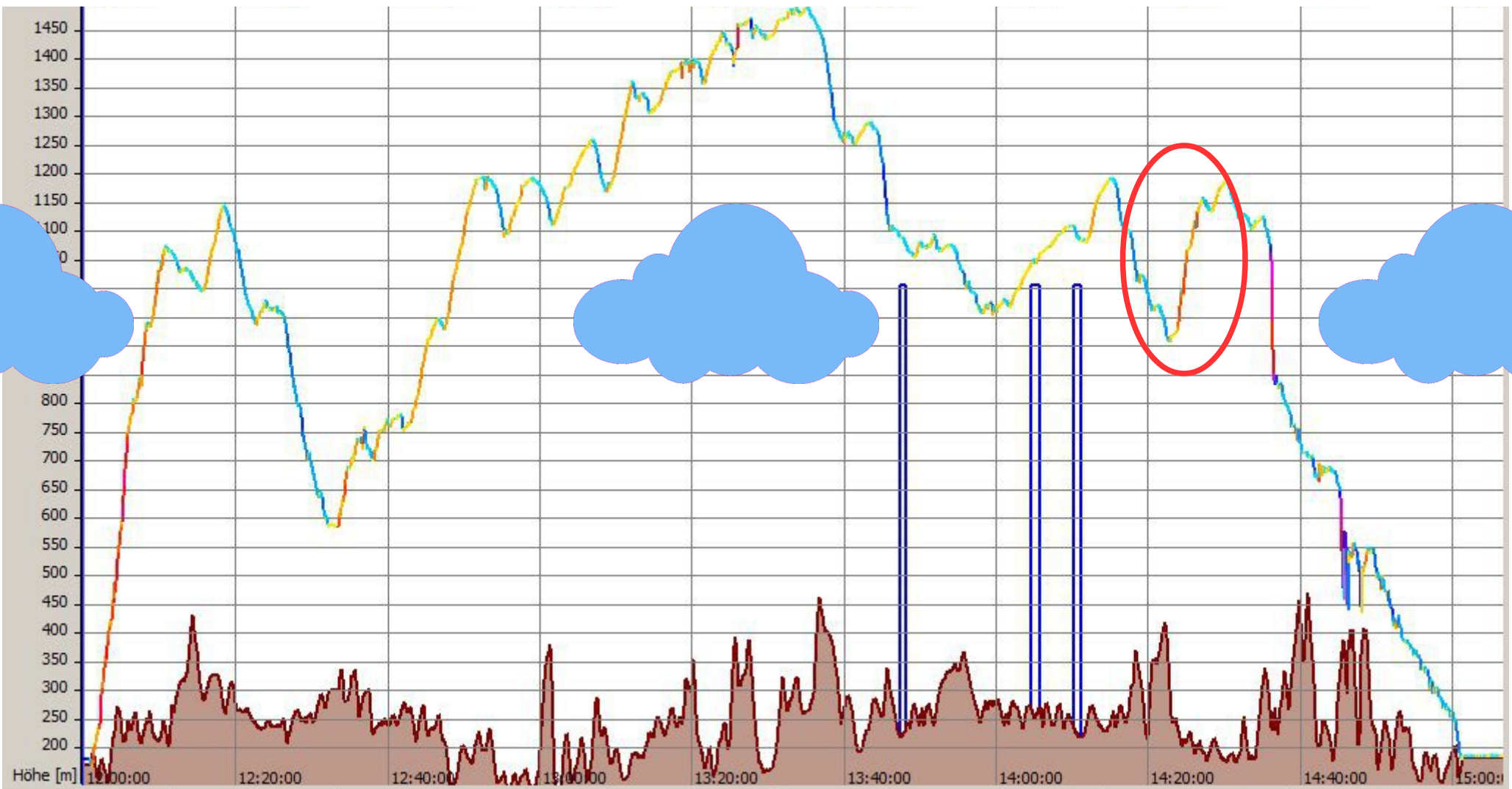


Eisenach

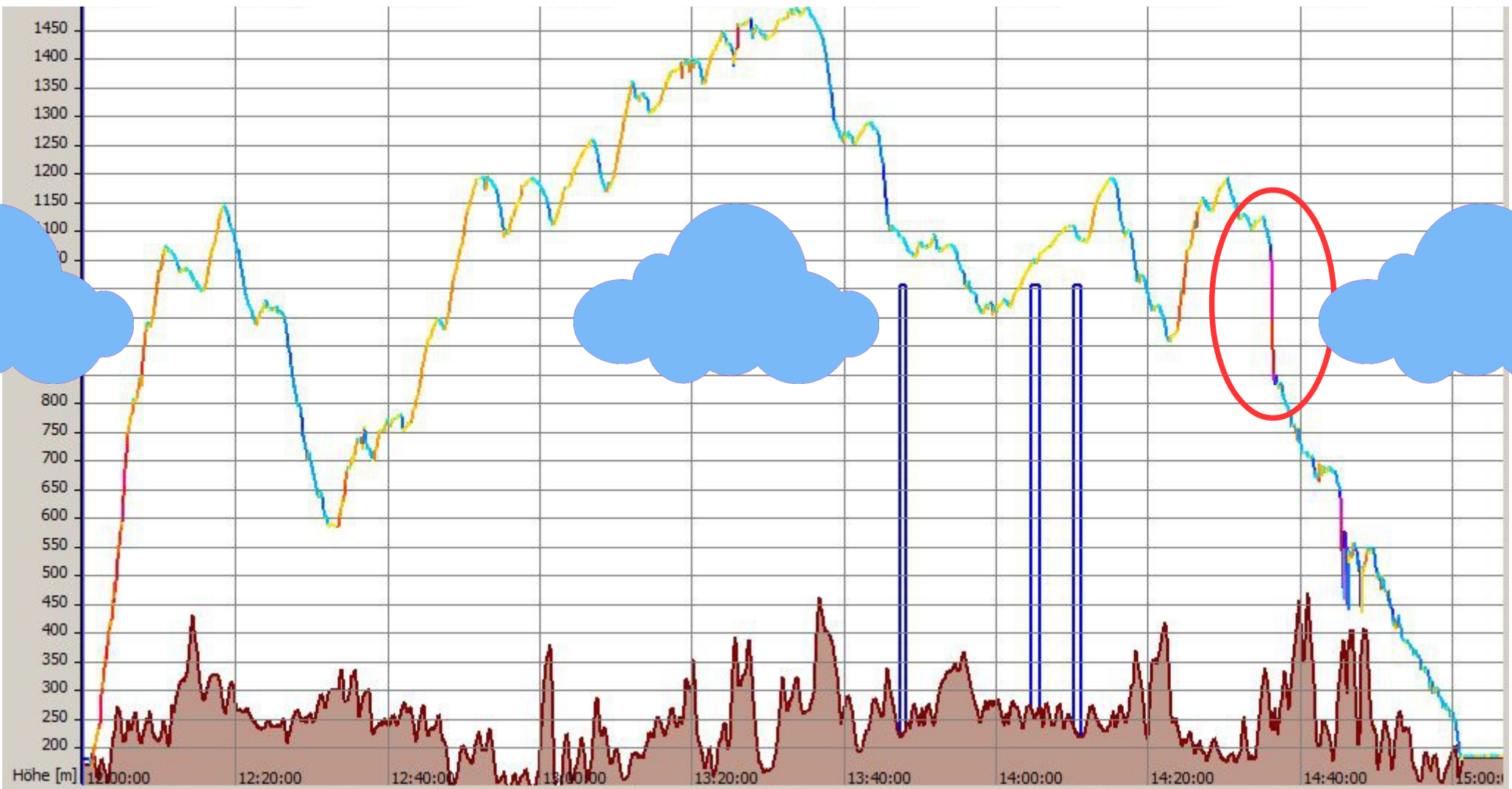


Mittelgebirgs-Leewellentreffen, 21.2.2015, Hannover, Christof Maul, Akaflieg Frankfurt



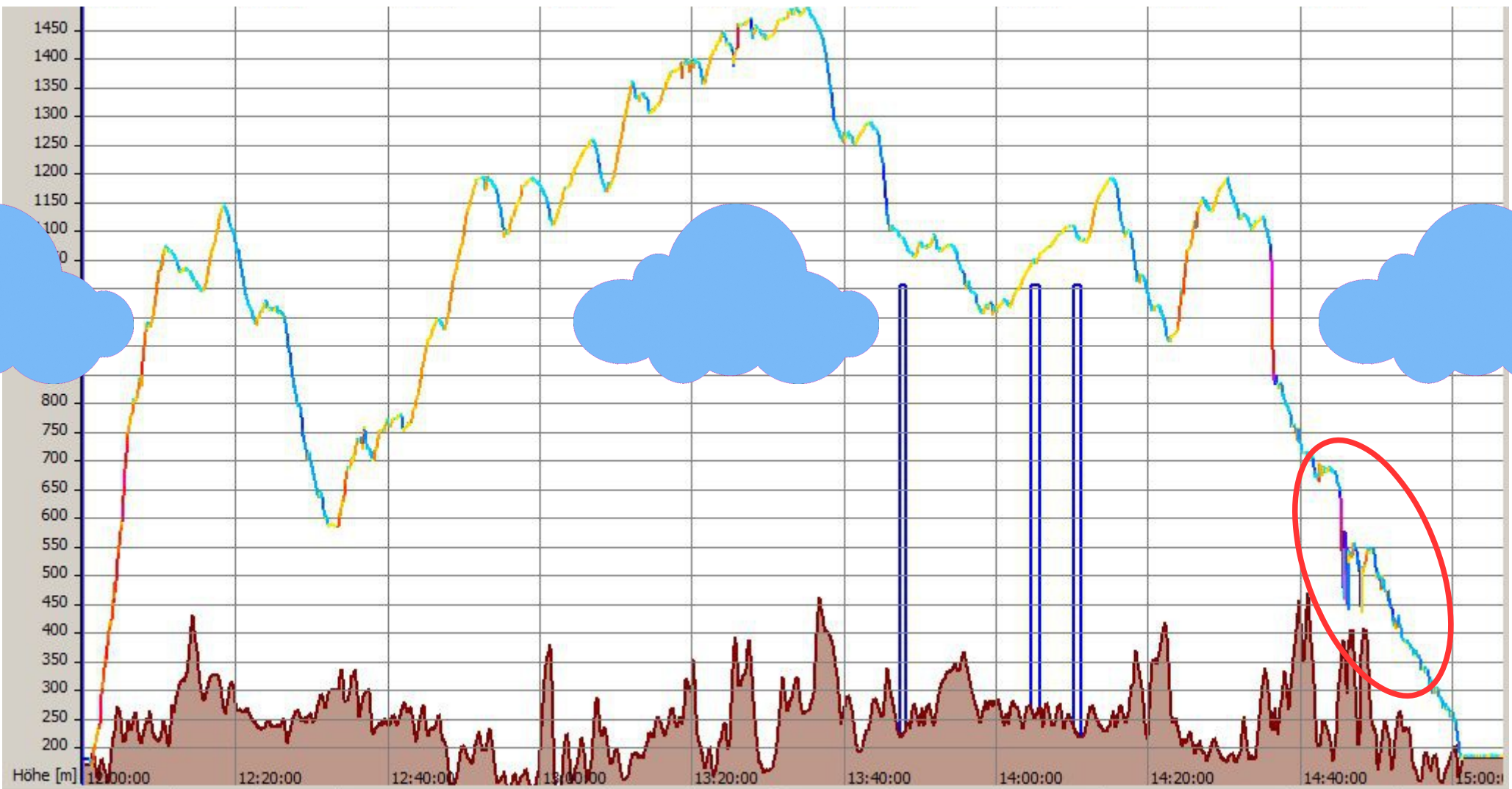


Mittelgebirgs-Leewellentreffen, 21.2.2015, Hannover, Christof Maul, Akaflieg Frankfurt

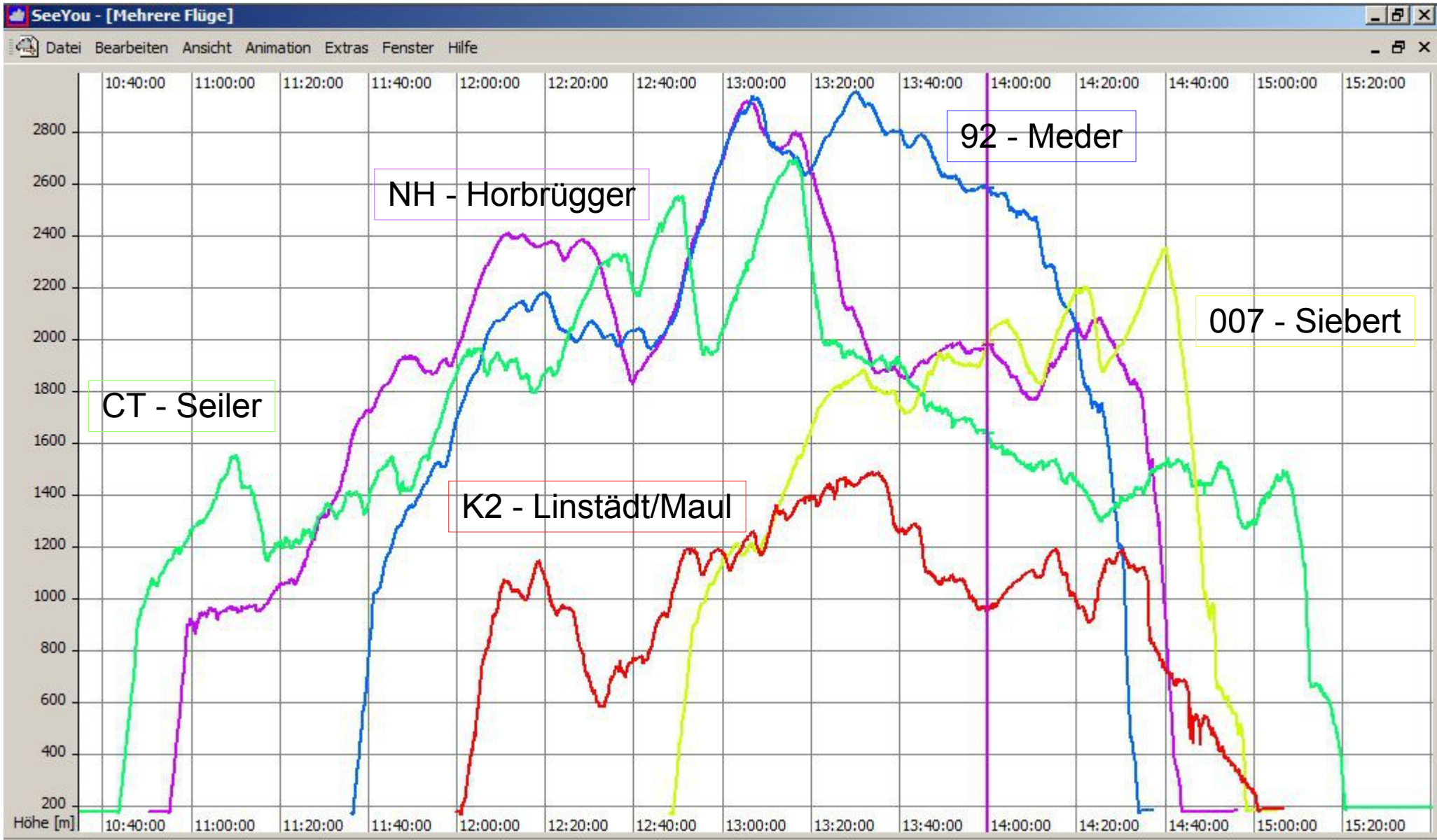


Mittelgebirgs-Leewellentreffen, 21.2.2015, Hannover, Christof Maul, Akaflieg Frankfurt

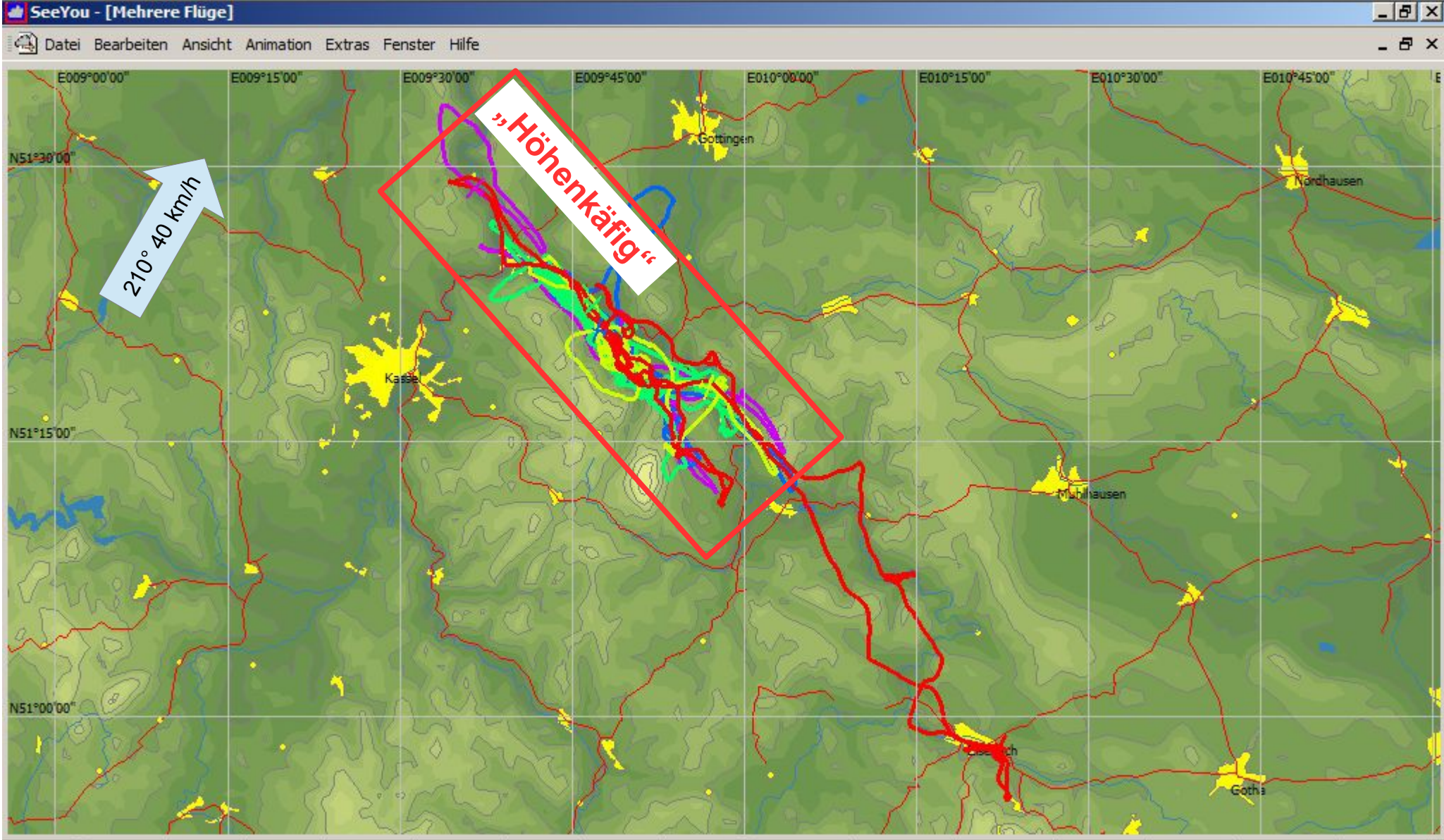




Mittelgebirgs-Leewellentreffen, 21.2.2015, Hannover, Christof Maul, Akaflieg Frankfurt







hochreichende Wellen an prominenten Bergen sind isoliert  
Streckenflug ist schwierig

weniger prominente Berge machen low level-Wellen  
können „Standardwellengebiete“ verbinden

häufig gutes (besseres) Steigen im Rotorwolken-Niveau

Rotor-Hang-Anbindung möglich

aber: riskant (Außenlandung)  
geeignetes Gelände erforderlich (Schottland/Werra...)

...muss das sein?

Transponder-Freigabe

Kälte

Sauerstoffmangel

Vereisung

Wellenfenster

nicht immer (vor allem mit Turbo)



