

# **Einige kleine Wellen**

**Beispiele von Harz, Altvater und Exotisches**

**OLC-Plus**

OLC-League

Destination

Standard

Google-Maps

## Flugdetails

Punkte des Fluges: **392.84**

Wertungsdistanz:

Speed:

Wertungsdauer:

Wertungsklasse: 18m

Index: 117,0

Club: [FC Schönebeck](#)

Tag der Meldung: 20.02.2015 18:08:54

Status:

IGC-Datei: Flug:

*Strecke*

*Dreieck*

376,52

16,32

440,5 km

63,6 km

68,4 km/h

10,7 km/h

06:26:09

05:56:32

## Flugweg

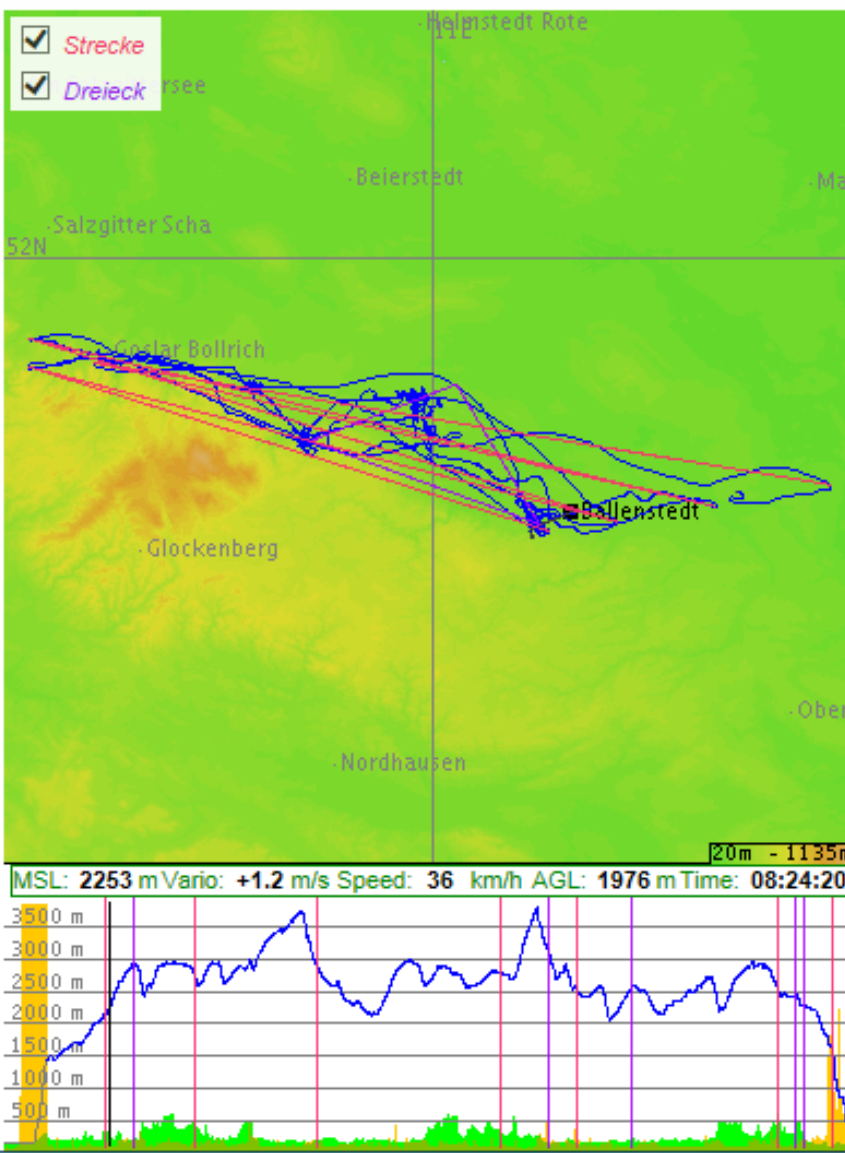
## Statistik

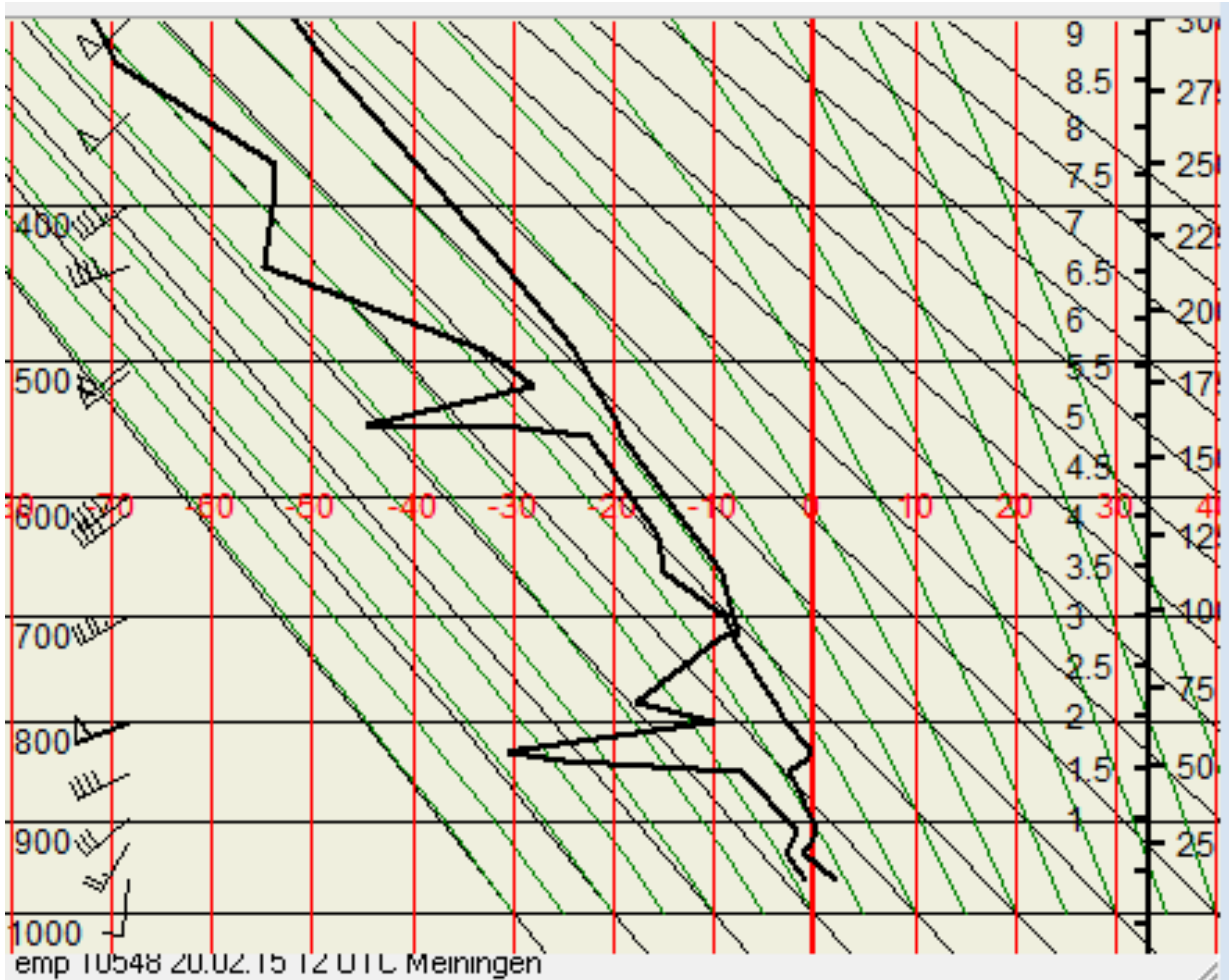
*Strecke (OLC-Classic):*

	s [km]	%Kurbel	N <sub>Aufwinde</sub>	R/C [m/s]	E	V <sub>d</sub> [km/h]
.leg1	62.13	17.57	5	1.10	-2824.27	77.97
.leg2	69.46	27.58	6	0.59	169.41	64.82
.leg3	70.23	28.53	11	0.66	56.01	42.90
.leg4	80.77	27.88	5	1.47	62.71	118.00
.leg5	72.85	26.54	11	0.64	72.06	41.26
.leg6	85.08	0.00	0	0.00	91.09	177.14
<b>Total</b>	<b>440.52</b>	<b>24.27</b>	<b>38</b>	<b>0.78</b>	<b>90.36</b>	<b>68.45</b>

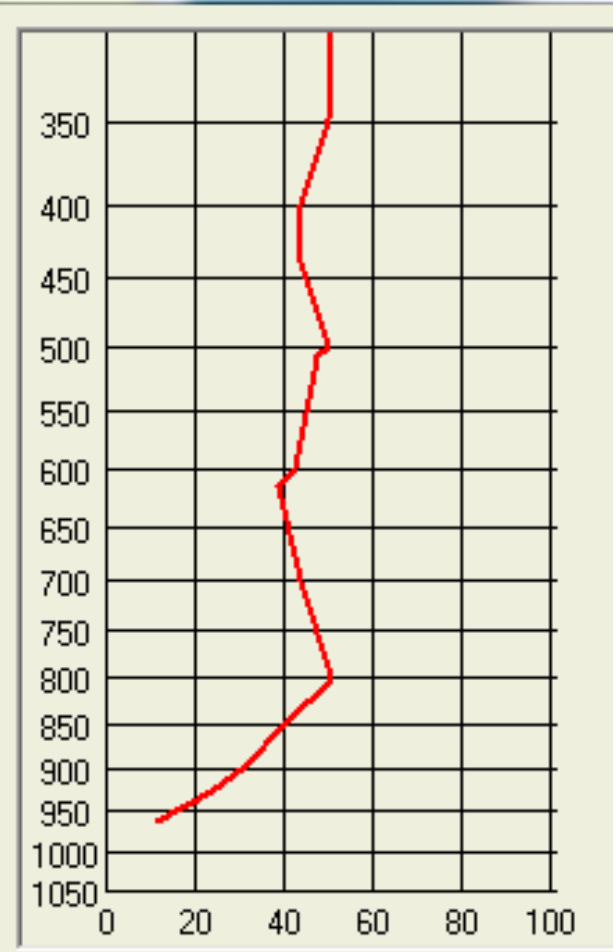
*Dreieck (FAI-OLC):*

	s [km]	%Kurbel	N <sub>Aufwinde</sub>	R/C [m/s]	E	V <sub>d</sub> [km/h]
.leg1	8.65	26.70	23	0.81	3.37	2.36
.leg2	18.06	15.32	3	0.74	20.57	24.13

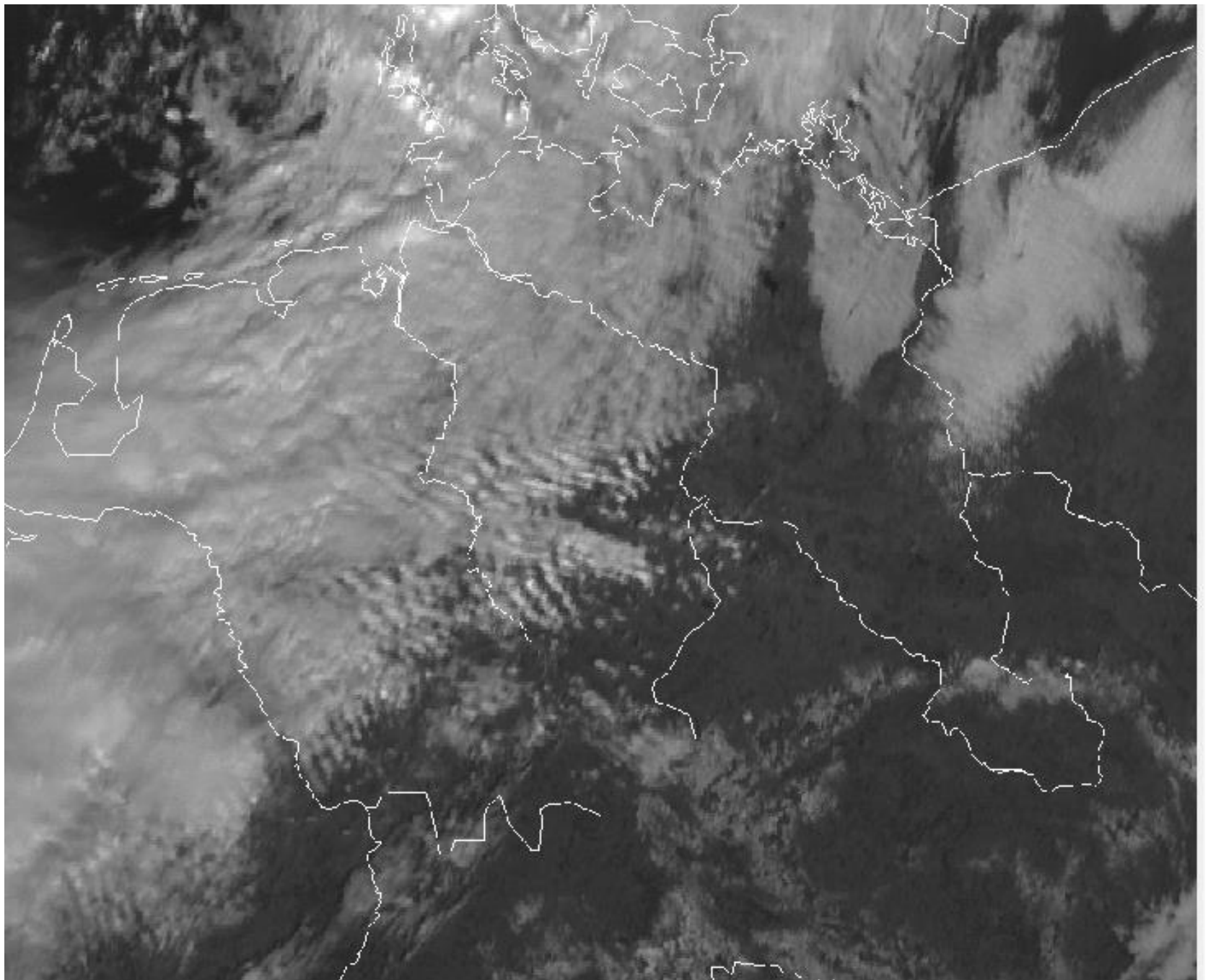




Temp 10548 20.02.15 12 UTC Meiningen

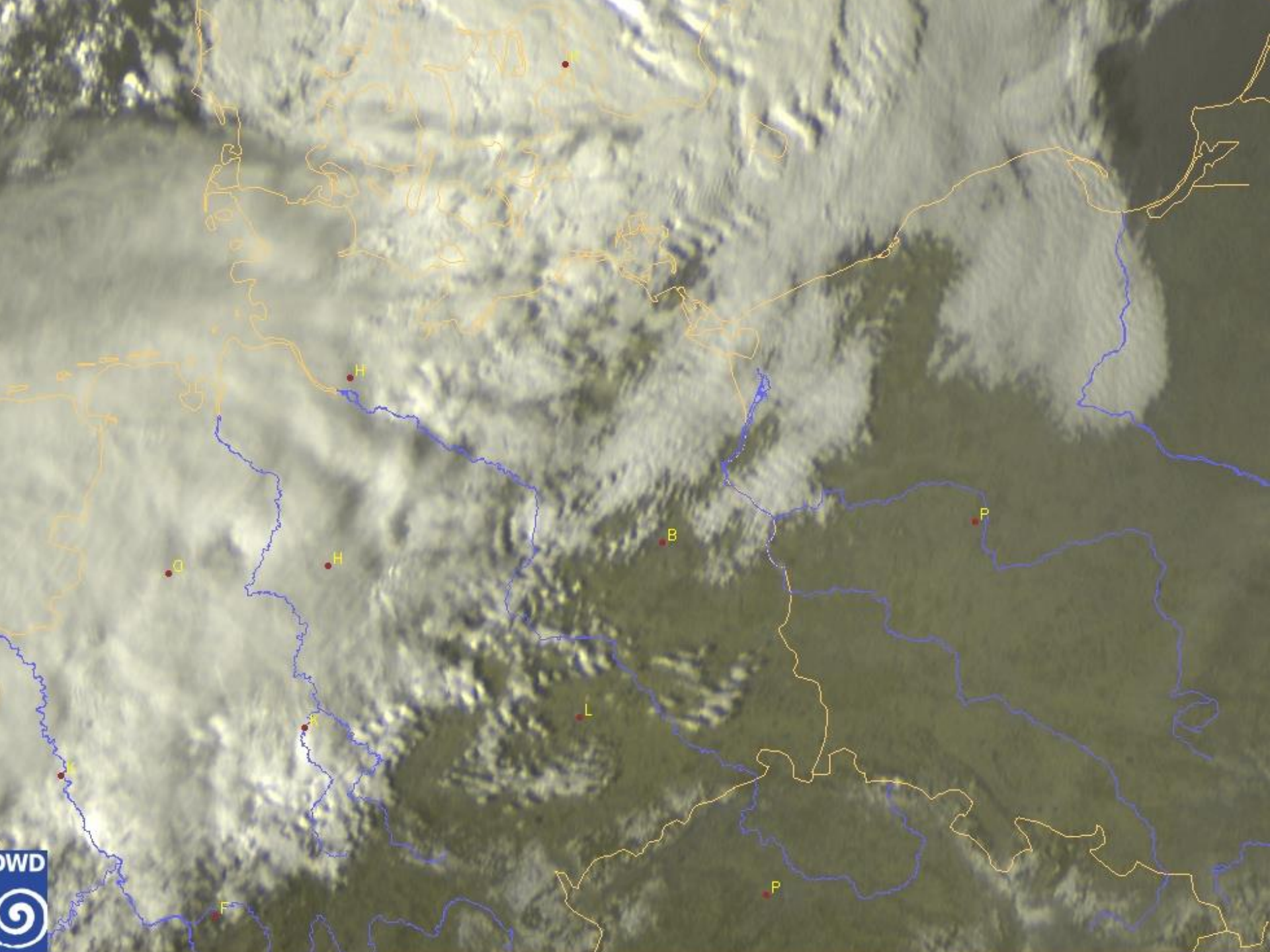


Profilart  
 Element   
 Post



20.02.15 11.30





# Fluginformation - Jan Eichhorn (DE) - 04.11.2014

Pilot: Sebastian Sandner (DE), Flugzeugtyp: Stemme S6-RT, Startplatz: Strausberg (DE / BB)



OLC-Plus

OLC-League

Destination

Standard  Google-Maps

## Flugdetails

Punkte des Fluges:	<b>80.93</b>	<i>Strecke</i>	<b>71,48</b>	<i>Dreieck</i>	<b>9,45</b>
Flugstreckendistanz:			76,5 km		33,7 km
Fluggeschwindigkeit:			36,9 km/h		17,0 km/h
Flugdauer:			02:04:16		01:58:47
Flugklasse:	Double				
Fluggeschwindigkeit:	107,0				
Flugort:	<a href="#">Akaflieg Berlin</a>				
Datum der Meldung:	04.11.2014 15:31:03				
Status:	IGC-Datei:  Flug:				

## Flugweg

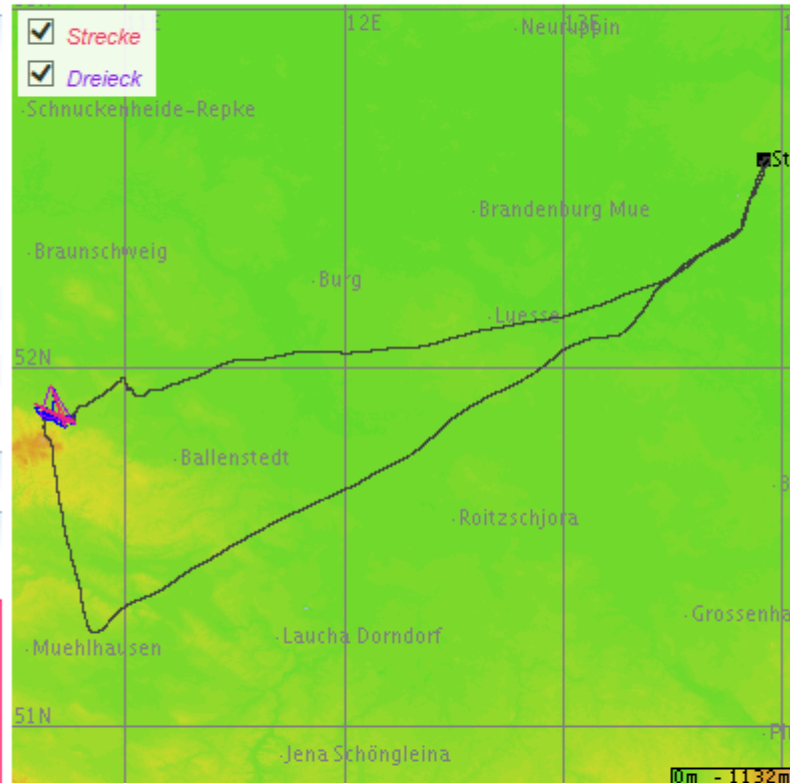
## Statistik

*Strecke (OLC-Classic):*

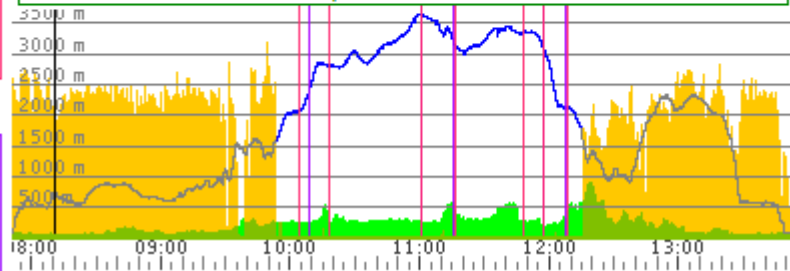
	s [km]	%Kurbel	N <sub>Aufwinde</sub>	R/C [m/s]	E	V <sub>d</sub> [km/h]
j1	14.00	20.28	2	1.06	-24.91	59.79
j2	14.09	20.15	5	0.47	-23.80	20.16
j3	13.05	17.02	1	-0.25	26.09	47.87
j4	10.44	46.78	4	0.35	193.39	19.69
j5	11.64	35.09	1	-0.05	42.79	76.18
j6	13.27	0.00	0	0.00	13.88	72.72
<b>total</b>	<b>76.49</b>	<b>27.68</b>	<b>15</b>	<b>0.35</b>	<b>114.85</b>	<b>36.93</b>

*Dreieck (FAI-OLC):*

	s [km]	%Kurbel	N <sub>Aufwinde</sub>	R/C [m/s]	E	V <sub>d</sub> [km/h]
j1	3.10	21.15	7	0.52	-3.35	3.59
j2	10.69	18.45	1	-0.25	28.75	42.54
j3	9.45	45.48	6	0.27	20.63	13.42



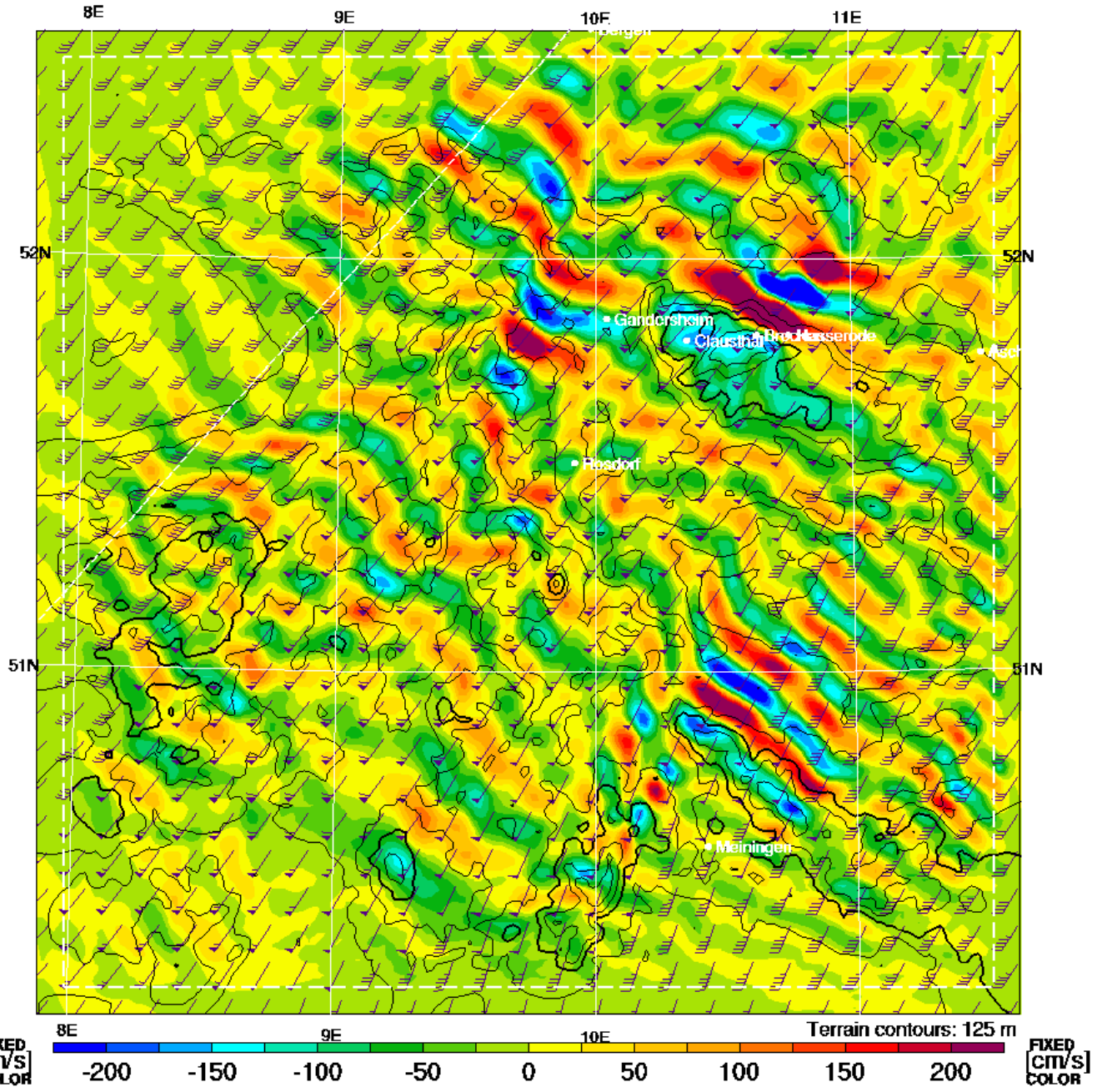
MSL: 734 m Vario: +0.7 m/s Speed: 131 km/h AGL: 700 m Time: 08:11:17





# Vertical Velocity & Wind [kt] at 702mb

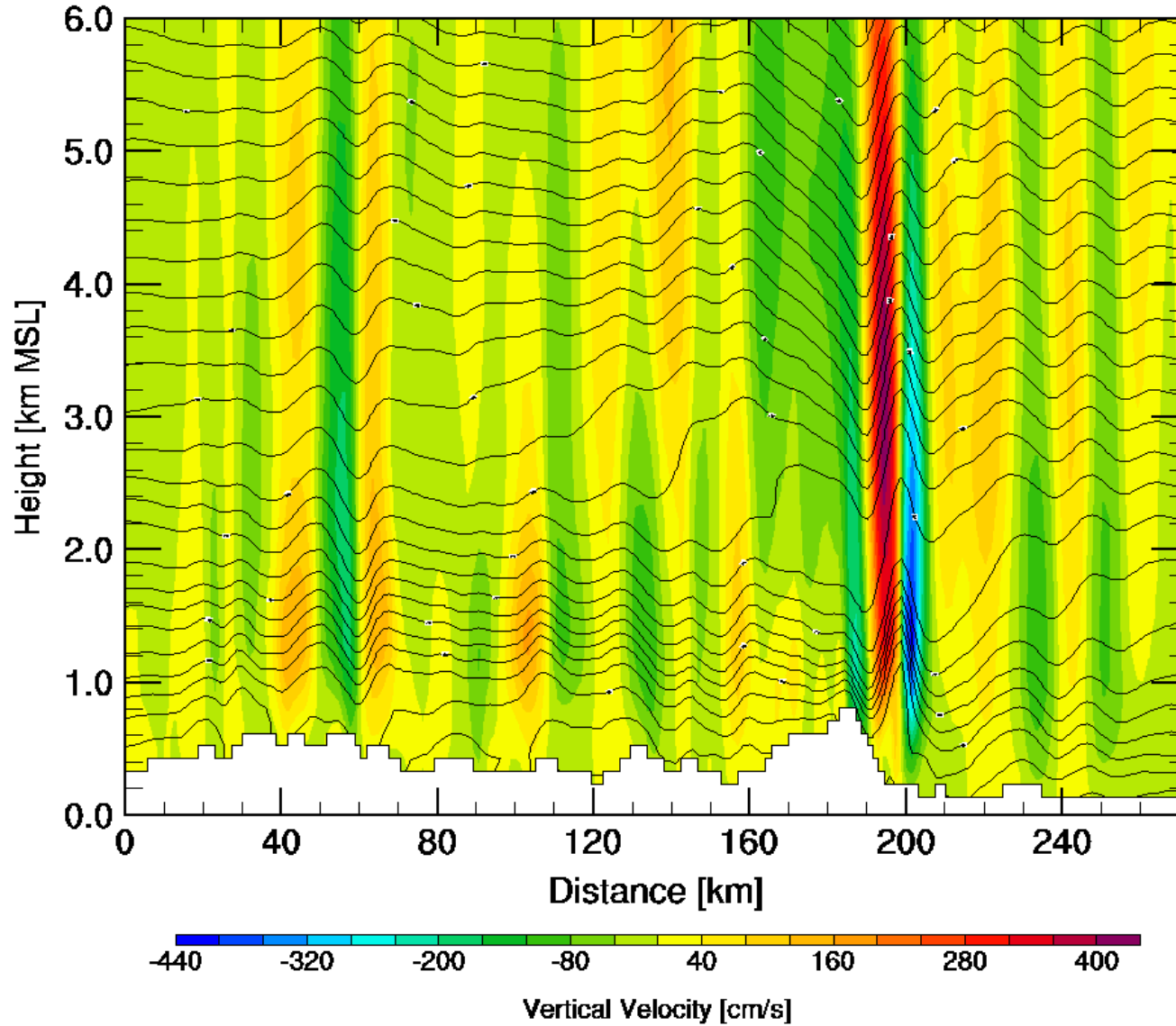
Valid 1200 CET (1100Z) TUE 4 Nov 2014 [29hrFcst@1244z]  
slice X,Y= 79,161@42°



# Angled Section: Vertical Velocity & Pot.Temp. (c)

Valid 1200 CET (1100Z) TUE 4 Nov 2014 [29hrFcst@1244z]

slice X,Y= 139,135@15°





Flugzeugtyp: Std. Jantar WL, Startplatz: Krnov (TS / CZ)

OLC-Plus

OLC-League

Destination

Standard

Google-Maps

## Flugdetails

	Strecke	Dreieck
Punkte des Fluges:	466.73	
Vertungsdistanz:	454,98	11,74
Speed:	459,6 km	39,5 km
Vertungsdauer:	59,5 km/h	5,4 km/h
Vertungsklasse:	07:43:16	07:20:53
Vertungsindex:	club	
Index:	101,0	
Club:	SFV Bad Wörishofen	
Tag der Meldung:	04.11.2014 15:54:41	
Status:	IGC-Datei: <span style="color: green;">●</span>	Flug: <span style="color: red;">●</span>

## Flugweg

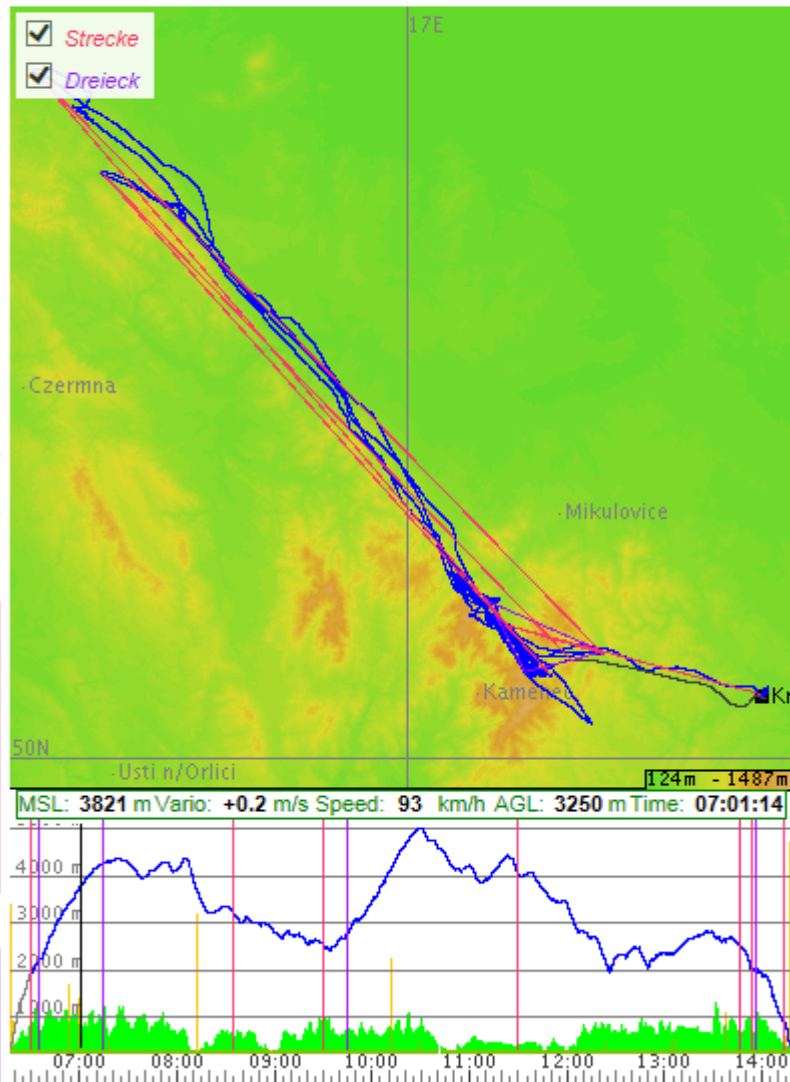
### Statistik

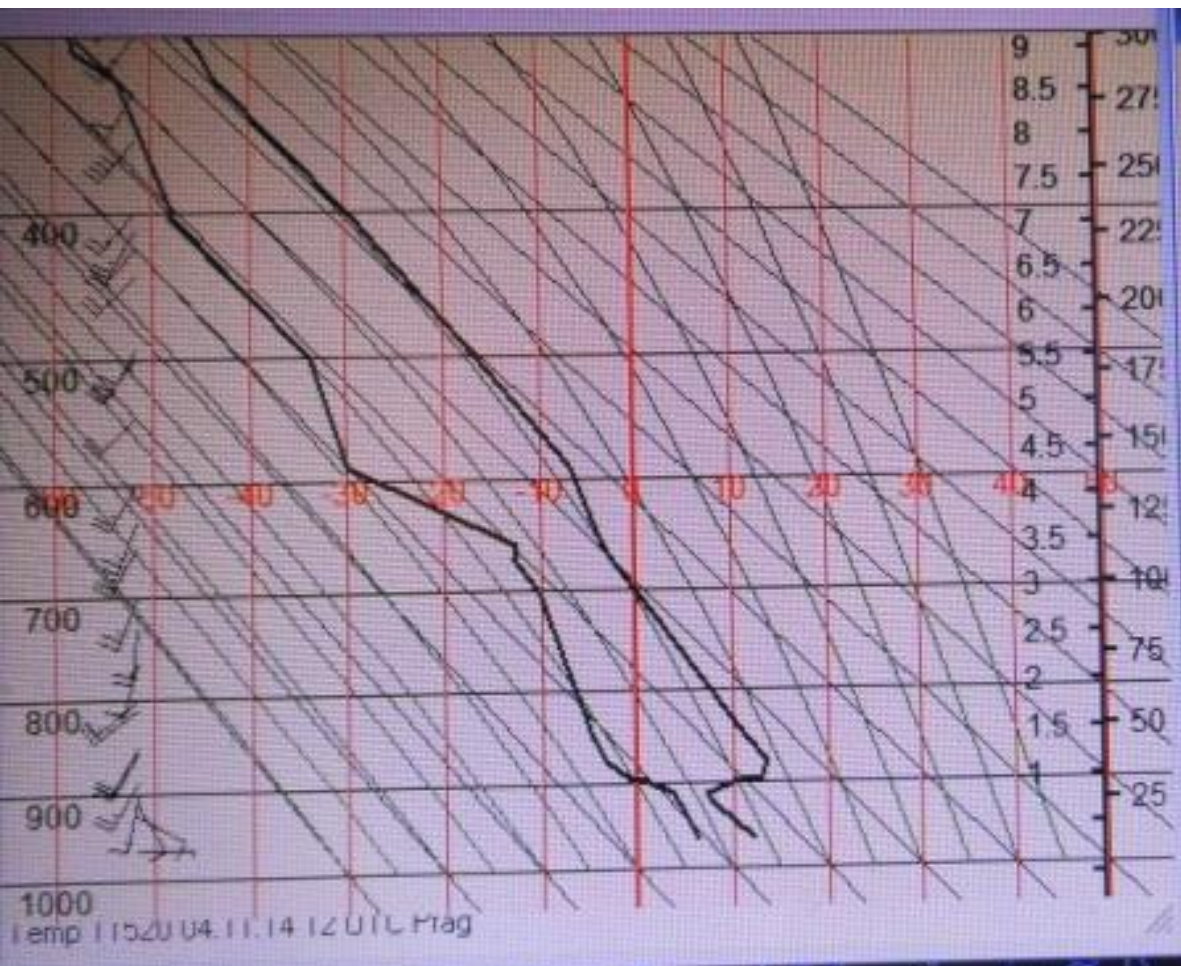
#### Strecke (OLC-Classic):

	s [km]	%Kurbel	N <sub>Aufwinde</sub>	R/C [m/s]	E	V <sub>d</sub> [km/h]
.leg1	93.57	9.62	11	0.76	-126.45	44.99
.leg2	93.40	2.68	1	0.62	131.73	102.42
.leg3	110.26	28.93	19	0.79	760.43	54.98
.leg4	112.69	28.53	10	0.57	39.01	49.32
.leg5	13.61	0.00	0	0.00	28.29	112.36
.leg6	36.02	6.90	1	0.68	31.21	113.24
<b>Total</b>	<b>459.55</b>	<b>19.15</b>	<b>42</b>	<b>0.68</b>	<b>99.08</b>	<b>59.52</b>

#### Dreieck (FAI-OLC):

	s [km]	%Kurbel	N <sub>Aufwinde</sub>	R/C [m/s]	E	V <sub>d</sub> [km/h]
.leg1	3.39	27.17	10	0.82	-2.19	5.09
.leg2	11.07	4.60	4	0.54	6.34	4.45
.leg3	17.39	28.69	27	0.68	5.70	4.30





OLC-Plus

OLC-League

Destination

Standard

Google-Maps

### Flugdetails

	Strecke	Dreieck
Punkte des Fluges:	155.86	134,40
Wertungsdistanz:	145,1 km	21,46
Speed:	35,4 km/h	77,2 km
Wertungsdauer:	04:06:08	19,3 km/h
Wertungsklasse:	standard	04:00:08
Index:	108,0	
Club:	AC Pirna	
Tag der Meldung:	29.10.2014 11:48:05	
Status:	IGC-Datei: <span style="color: green;">●</span>	Flug: <span style="color: green;">●</span>

### Flugweg

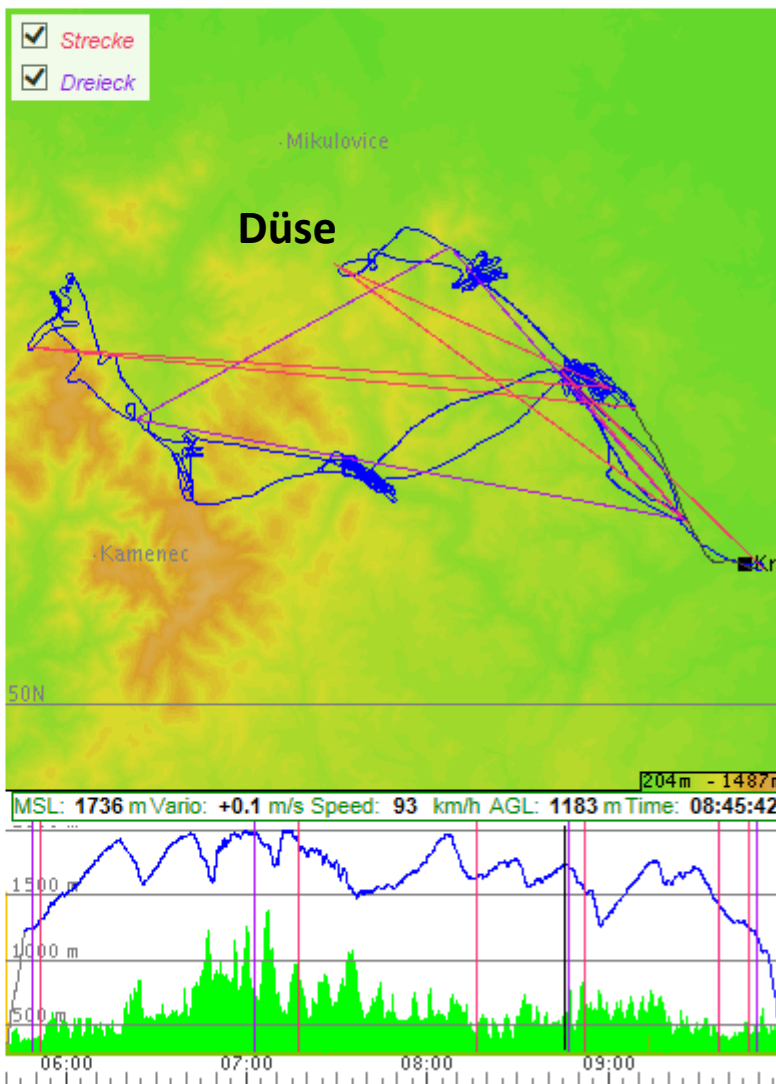
### Statistik

Strecke (OLC-Classic):

	s [km]	%Kurbel	N <sub>Aufwinde</sub>	R/C [m/s]	E	V <sub>d</sub> [km/h]
Leg1	37.09	33.05	21	0.60	78.92	25.96
Leg2	35.43	25.79	13	0.28	71.58	36.07
Leg3	17.88	34.32	9	0.21	69.02	29.85
Leg4	25.84	28.55	12	0.32	73.83	34.76
Leg5	11.78	0.00	0	0.00	67.32	70.22
Leg6	17.12	0.00	0	0.00	21.32	94.55
<b>Total</b>	<b>145.14</b>	<b>28.30</b>	<b>56</b>	<b>0.41</b>	<b>56.67</b>	<b>35.38</b>

Dreieck (FAI-OLC):

	s [km]	%Kurbel	N <sub>Aufwinde</sub>	R/C [m/s]	E	V <sub>d</sub> [km/h]
Leg1	28.49	34.95	21	0.51	445.14	23.10
Leg2	21.69	31.04	24	0.36	23.30	12.55
Leg3	21.66	25.43	12	0.32	39.89	25.96





Flugzeugtyp: JS 1 C Revelation, Startplatz: Saint Auban (FR)



OLC-Plus

OLC-League

Standard

Google-Maps

## Flugdetails

Punkte des Fluges: 9.7

Startstreckendistanz:

Maximalgeschwindigkeit:

Startstreckendauer:

Startstreckenkategorie: 18m

Flughöhe: 119,0

Flugclub:

Datum der Meldung: 04.10.2014 16:07:27

Status:

IGC-Datei: ● Flug: ●

Strecke

8,43

10,0 km

41,4 km/h

00:14:33

Dreieck

1,27

5,0 km

23,6 km/h

00:12:51

## Flugweg

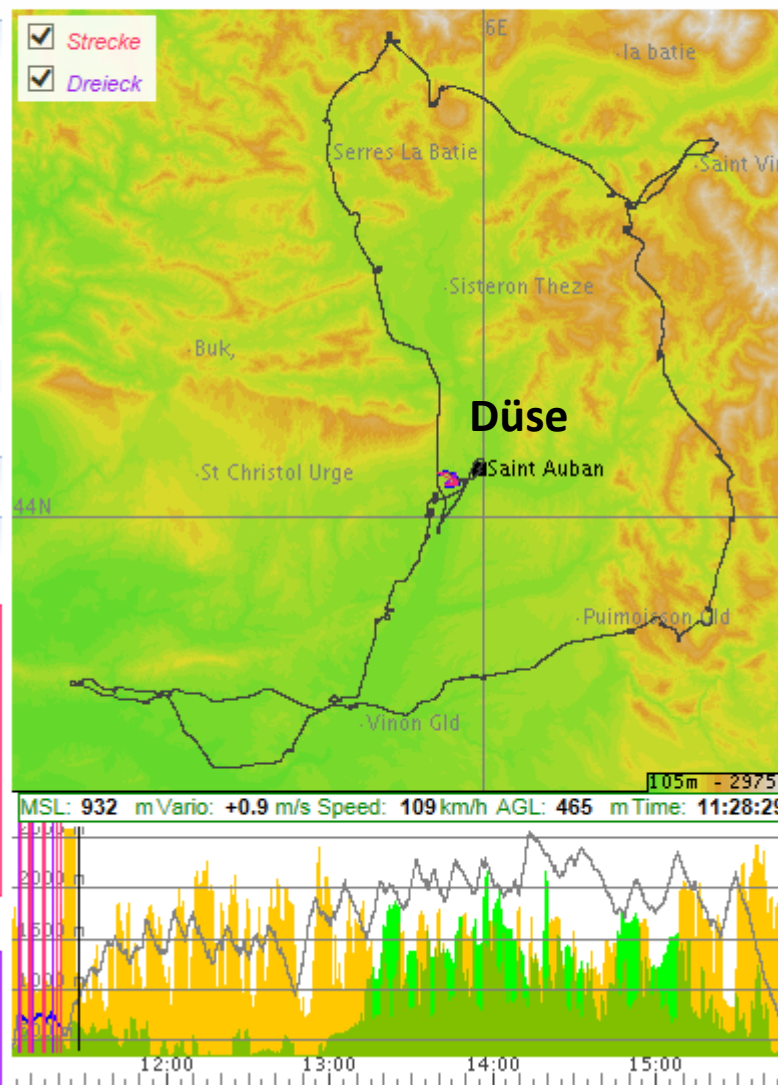
## Flugstatistik

Strecke (OLC-Classic):

	s [km]	%Kurbel	N <sub>Aufwinde</sub>	R/C [m/s]	E	V <sub>d</sub> [km/h]
g1	1.84	49.09	1	-0.23	29.18	40.11
g2	1.58	0.00	0	0.00	121.19	107.01
g3	0.86	94.80	1	0.43	107.90	12.43
g4	1.01	0.00	0	0.00	48.26	71.54
g5	3.43	63.73	1	0.16	36.44	43.42
g6	1.32	0.00	0	0.00	20.60	67.79
<b>total</b>	<b>10.03</b>	<b>62.89</b>	<b>3</b>	<b>0.22</b>	<b>37.16</b>	<b>41.38</b>

Dreieck (FAI-OLC):

	s [km]	%Kurbel	N <sub>Aufwinde</sub>	R/C [m/s]	E	V <sub>d</sub> [km/h]
g1	1.37	66.98	2	-0.12	21.75	22.95
g2	1.48	64.35	1	0.92	35.34	46.46
g3	1.47	87.76	2	0.20	33.41	12.00





Flugzeugtyp: Discus, Startplatz: Aschersleben (DE / ST)

OLC-Plus OLC-League Destination

Standard Google-Maps

## Flugdetails

Punkte des Fluges: **179.78**

Wertungsdistanz:

Speed:

Wertungsdauer:

Wertungsklasse: standard

Index: 107,0

Club: [LSV Gifhorn](#)

Tag der Meldung: 02.11.2014 21:15:20

Status: IGC-Datei: ✔ Flug: ✔

Strecke Dreieck

166,81	12,97
178,5 km	46,2 km
51,5 km/h	13,2 km/h
03:27:51	03:29:39

## Flugweg

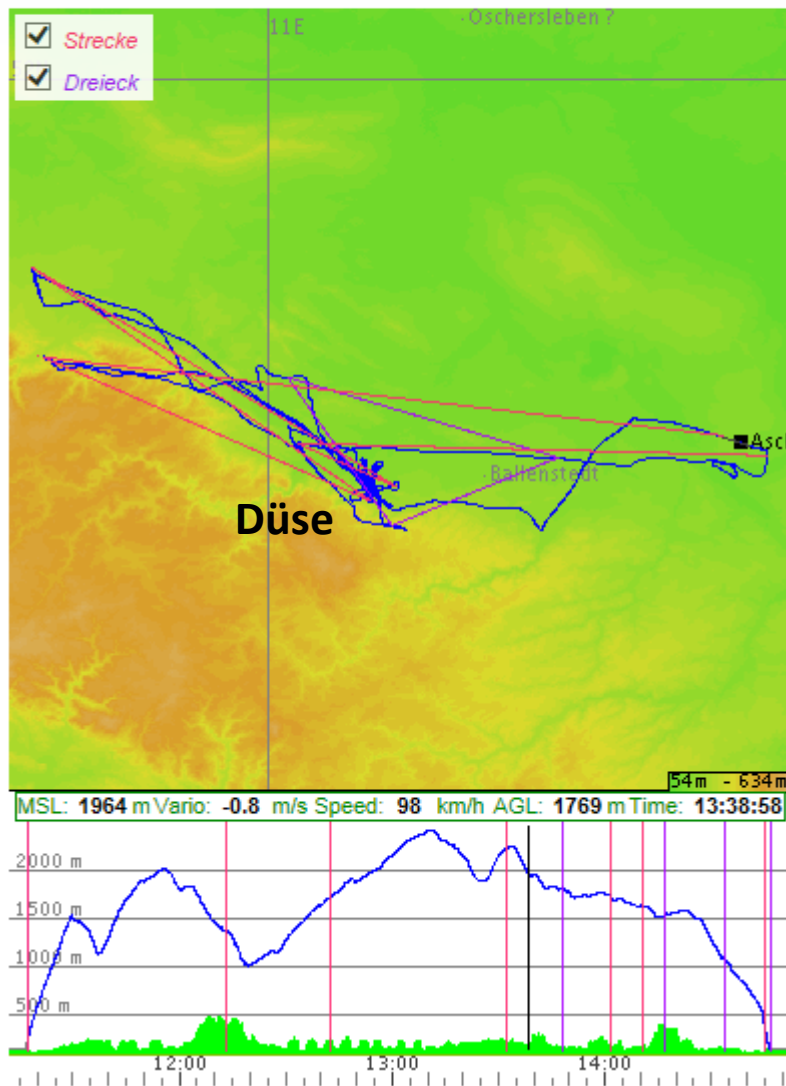
## Statistik

Strecke (OLC-Classic):

	s [km]	%Kurbel	NAufwinde	R/C [m/s]	E	V <sub>d</sub> [km/h]
Leg1	49.51	8.36	4	0.67	-53.75	52.81
Leg2	26.04	19.97	5	0.49	-134.90	53.77
Leg3	29.89	25.88	11	0.46	-195.35	35.97
Leg4	30.91	3.60	1	0.05	62.96	63.63
Leg5	8.01	0.00	0	0.00	71.49	54.28
Leg6	34.14	3.46	1	0.10	26.57	59.04
<b>Total</b>	<b>178.50</b>	<b>13.42</b>	<b>24</b>	<b>0.46</b>	<b>265.23</b>	<b>51.53</b>

Dreieck (FAI-OLC):

	s [km]	%Kurbel	NAufwinde	R/C [m/s]	E	V <sub>d</sub> [km/h]
Leg1	31.65	17.73	23	0.48	-39.47	12.61
Leg2	12.97	0.00	0	0.00	47.00	26.61
Leg3	12.98	7.10	1	0.10	27.63	46.10



OLC-Plus

OLC-League

Destination

Standard Google-Maps

## Flugdetails

	Strecke	Dreieck
Punkte des Fluges:	273.59	264,40
Wertungsdistanz:	264,4 km	9,19
Speed:	41,5 km/h	30,6 km
Wertungsdauer:	06:22:03	4,8 km/h
Wertungsklasse:	club	06:20:33
Index:	100,0	
Club:	Aeroklub Opolski	
Tag der Meldung:	05.11.2014 21:18:34	
Status:	IGC-Datei: <span style="color: green;">✔</span>	Flug: <span style="color: green;">✔</span>

## Flugweg

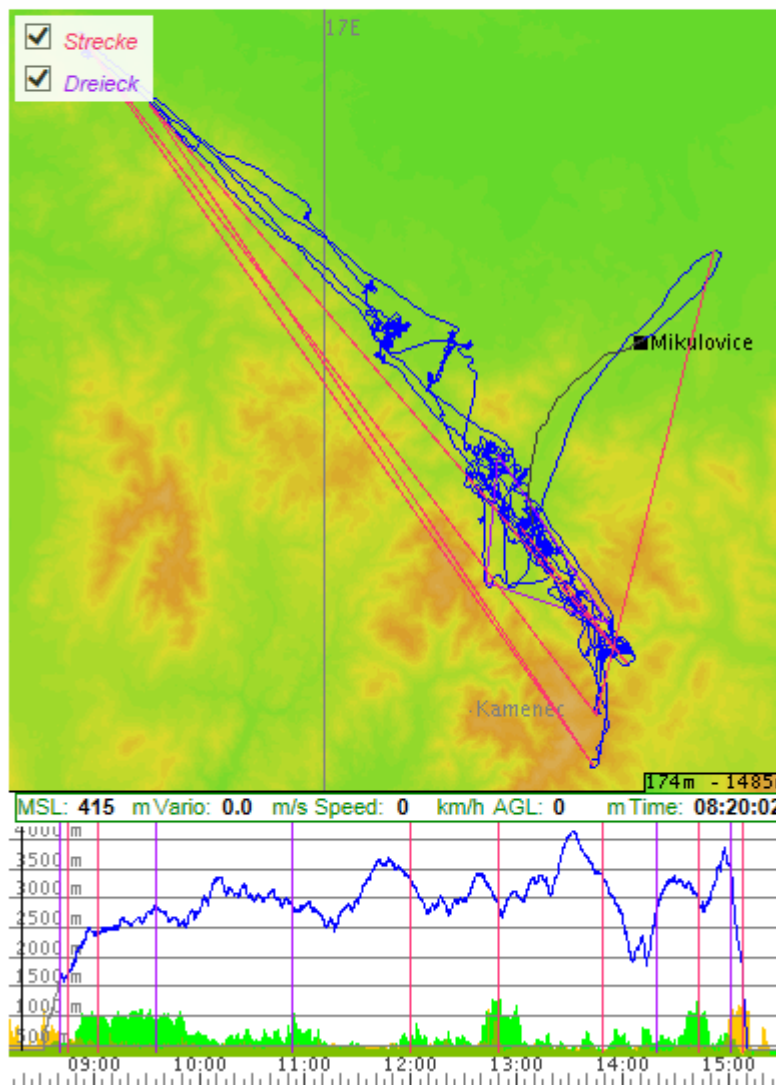
## Statistik

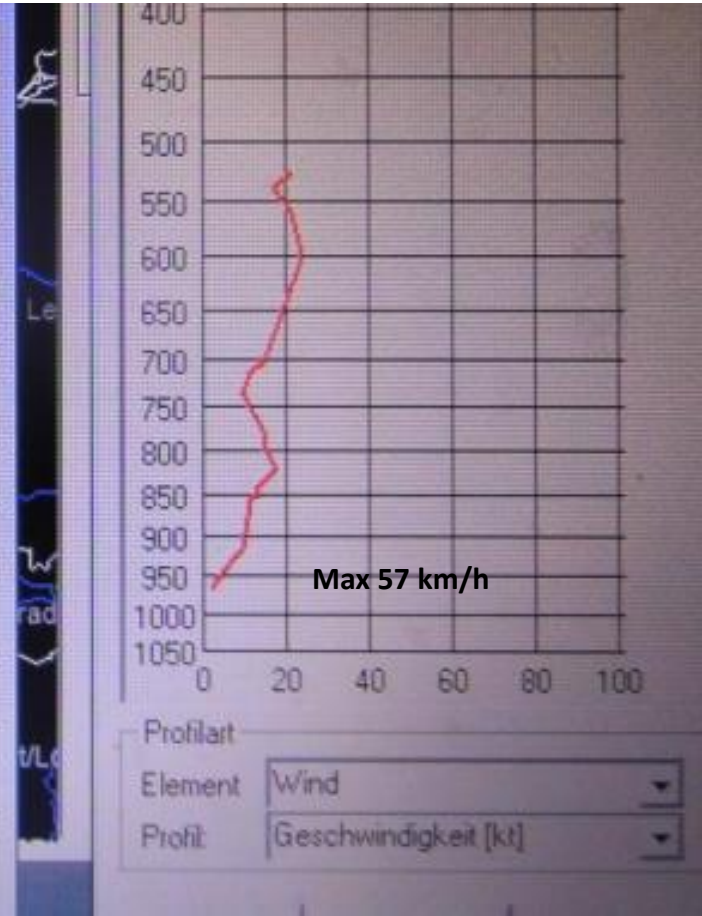
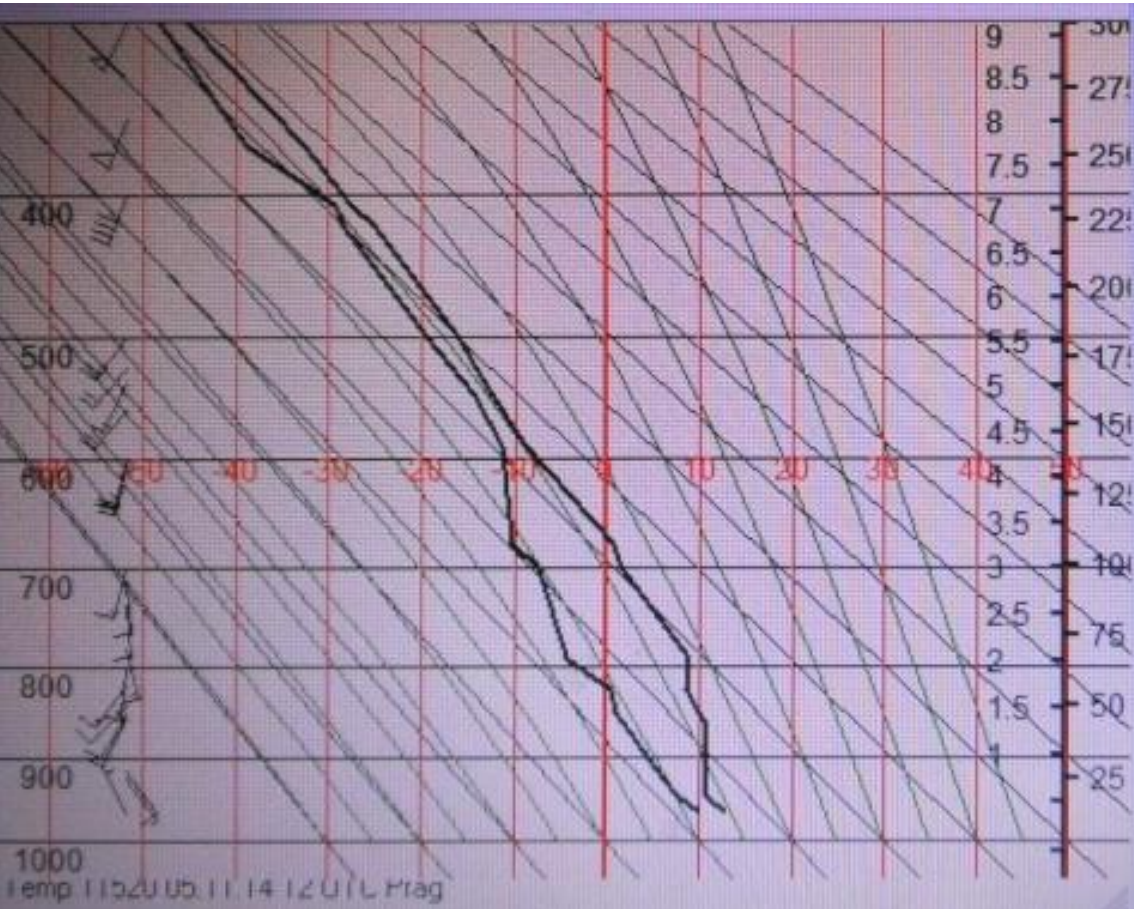
### Strecke (OLC-Classik):

	s [km]	%Kurbel	N <sub>Aufwinde</sub>	R/C [m/s]	E	V <sub>d</sub> [km/h]
Leg1	11.73	53.91	3	0.97	-61.10	40.81
Leg2	49.30	56.64	33	0.69	15.31	16.77
Leg3	53.50	37.54	6	0.89	36.59	64.26
Leg4	60.26	46.60	6	1.14	41.61	60.71
Leg5	57.48	22.78	6	1.39	40.82	63.87
Leg6	32.13	0.00	0	0.00	27.99	77.42
<b>Total</b>	<b>264.40</b>	<b>43.98</b>	<b>54</b>	<b>0.86</b>	<b>31.13</b>	<b>41.52</b>

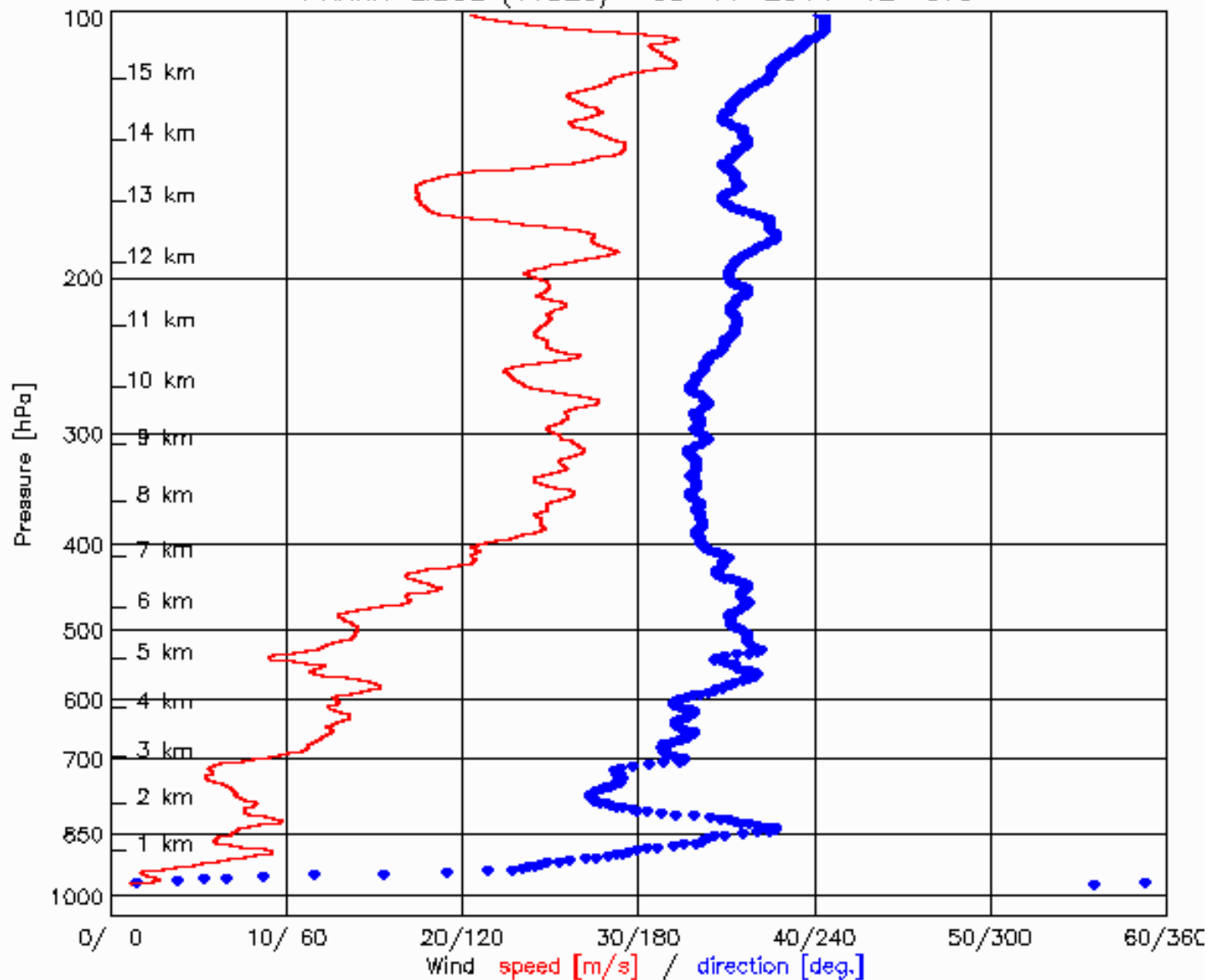
### Dreieck (FAI-OLC):

	s [km]	%Kurbel	N <sub>Aufwinde</sub>	R/C [m/s]	E	V <sub>d</sub> [km/h]
Leg1	8.49	58.79	11	0.69	50.85	9.33
Leg2	8.59	51.09	15	0.75	4.79	6.67
Leg3	8.65	43.72	26	0.97	1.64	2.51



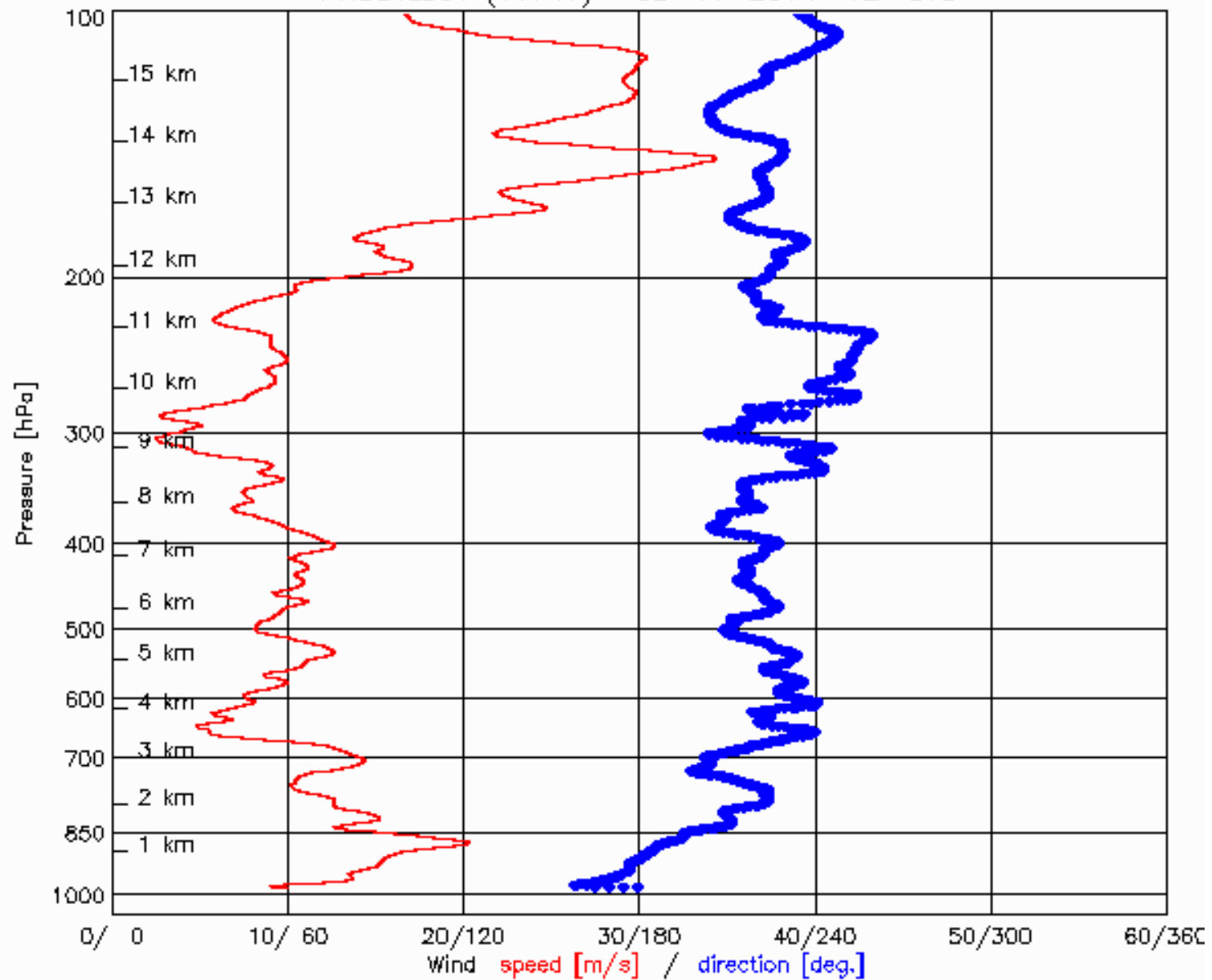


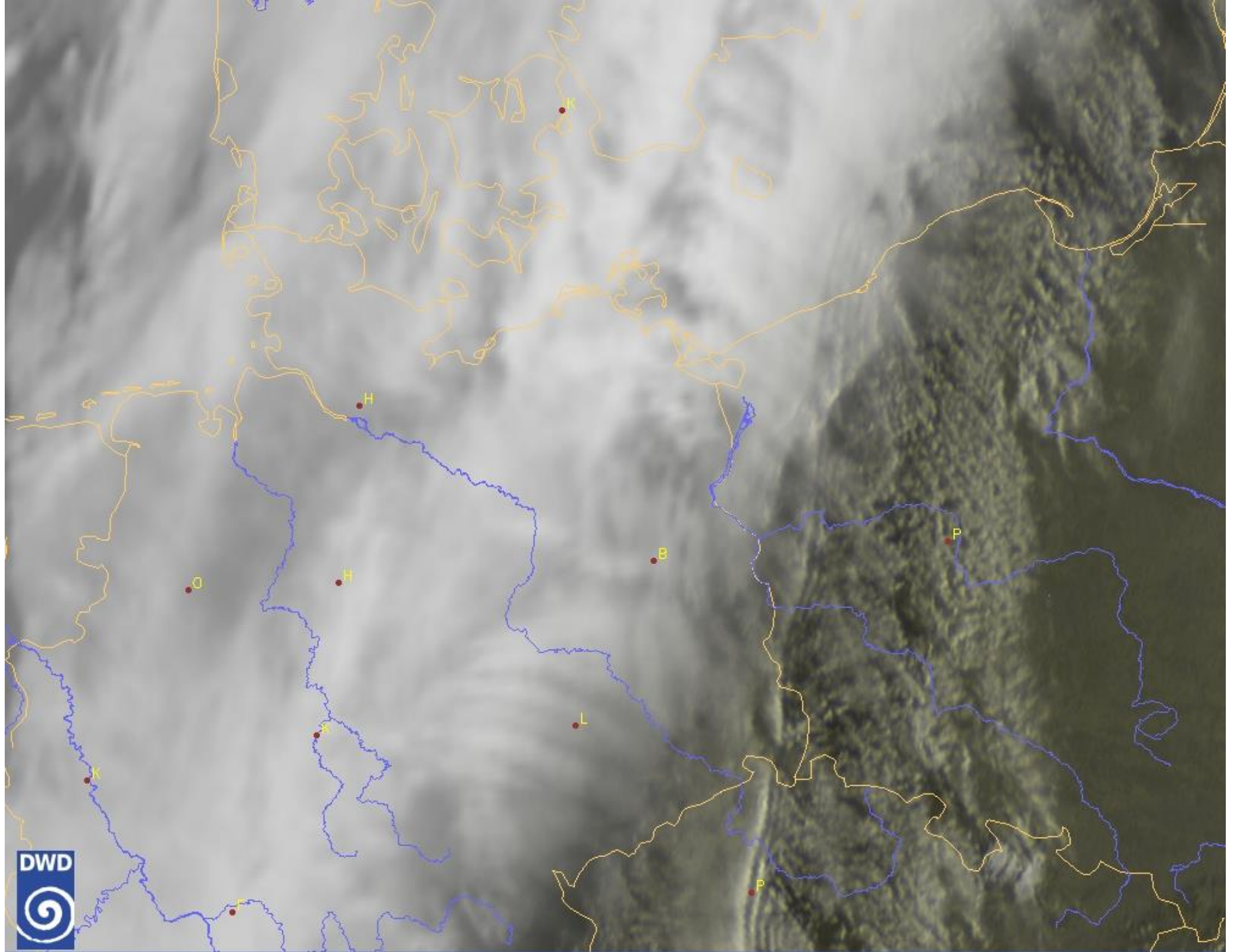
PRAHA-LIBUS (11520) 05-11-2014 12 UTC



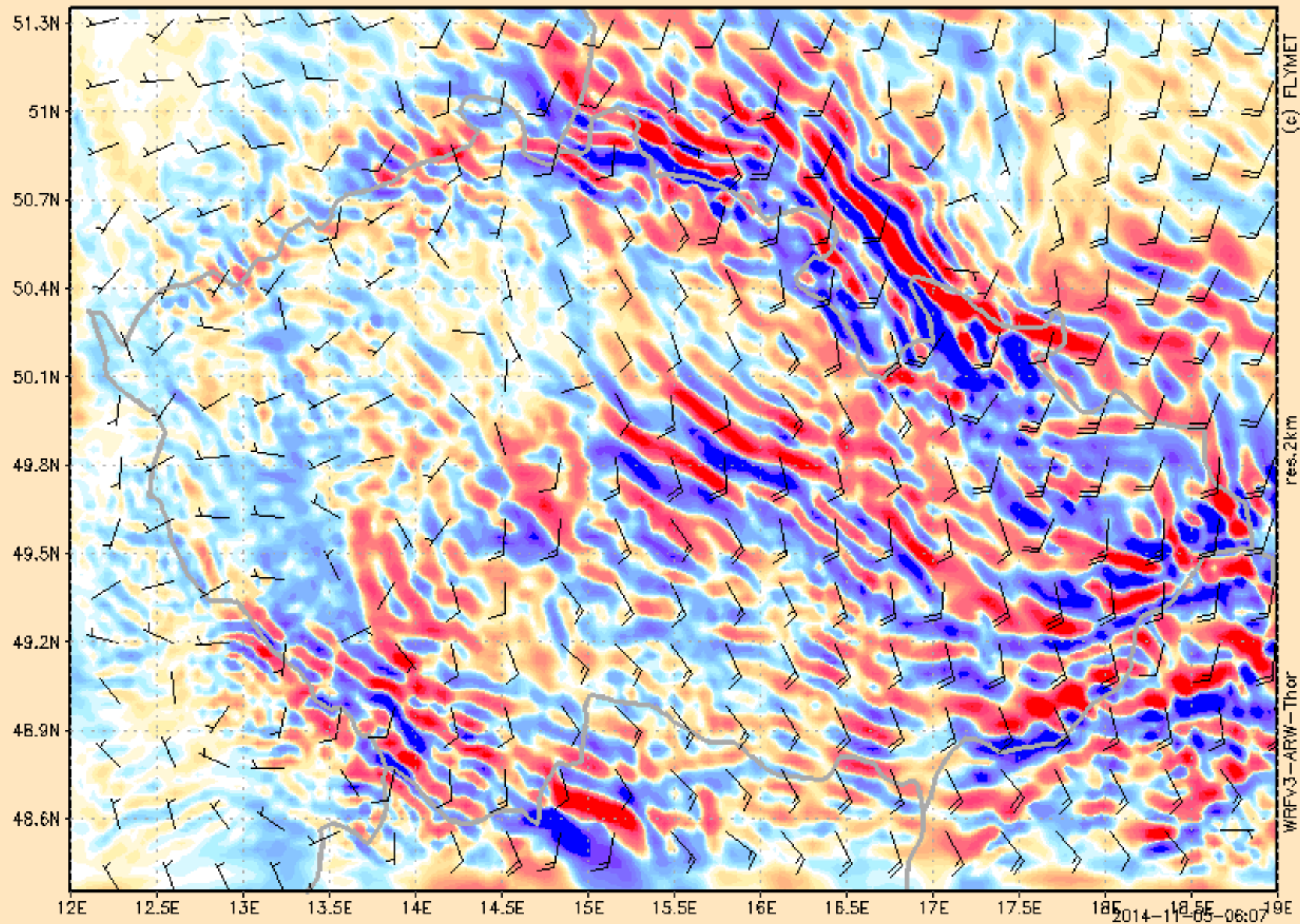


PROSTEJOV (11747) 05-11-2014 12 UTC





# "vlnove rozruchy" ve 2 km streda 05.11.2014 12 hod UTC



(c) FLYMET

res. 2km

WRFv3-ARW-Thor

2014-11-05-06:07





11.5.2014 13:46





11.5.2014 14:03









# Fluginformation - Krzysztof Kleczynski (PL) - 13.01.2015

Flugzeugtyp: Std. Jantar, Startplatz: Mikulovice (TS / CZ)



OLC-Plus
  OLC-League
  BHC
  Destination

Standard
  Google-Maps

## Flugdetails

	Strecke	Dreieck
Punkte des Fluges:	709.33	
Wertungsdistanz:	674,92	34,41
Speed:	674,9 km	114,7 km
Wertungsdauer:	104,7 km/h	15,6 km/h
Wertungsklasse:	06:26:40	07:20:24
Wertungskategorie:	club	
Index:	100,0	
Club:	<a href="#">Aeroklub Opolski</a>	
Tag der Meldung:	13.01.2015 19:54:02	
Status:	IGC-Datei:	Flug:

## Flugweg

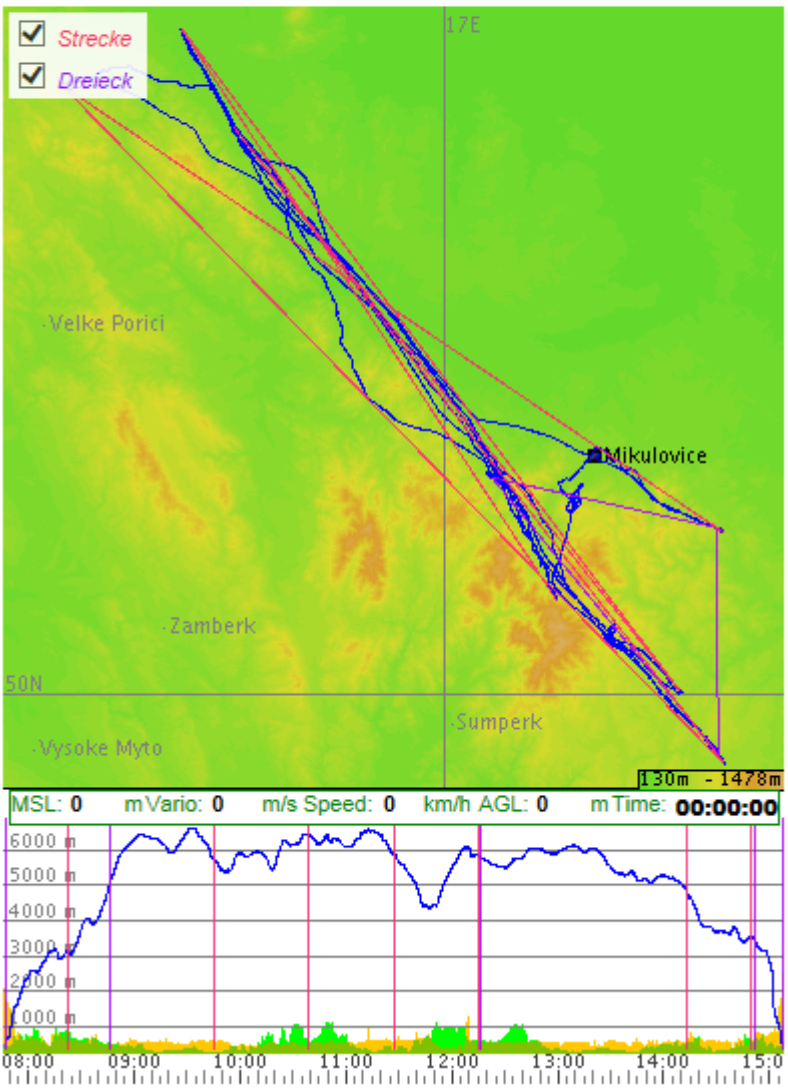
## Statistik

### Strecke (OLC-Classic):

	s [km]	%Kurbel	N <sub>Aufwinde</sub>	R/C [m/s]	E	V <sub>d</sub> [km/h]
Leg1	96.29	12.97	6	2.34	-89.57	69.38
Leg2	117.20	4.51	1	2.81	-412.66	132.18
Leg3	101.62	2.88	1	1.37	155.38	125.46
Leg4	113.55	18.77	6	1.88	108.87	143.13
Leg5	134.02	8.52	3	0.38	109.13	68.49
Leg6	112.24	0.00	0	0.00	88.10	184.00
<b>Total</b>	<b>674.91</b>	<b>8.67</b>	<b>17</b>	<b>1.63</b>	<b>237.64</b>	<b>104.73</b>

### Dreieck (FAI-OLC):

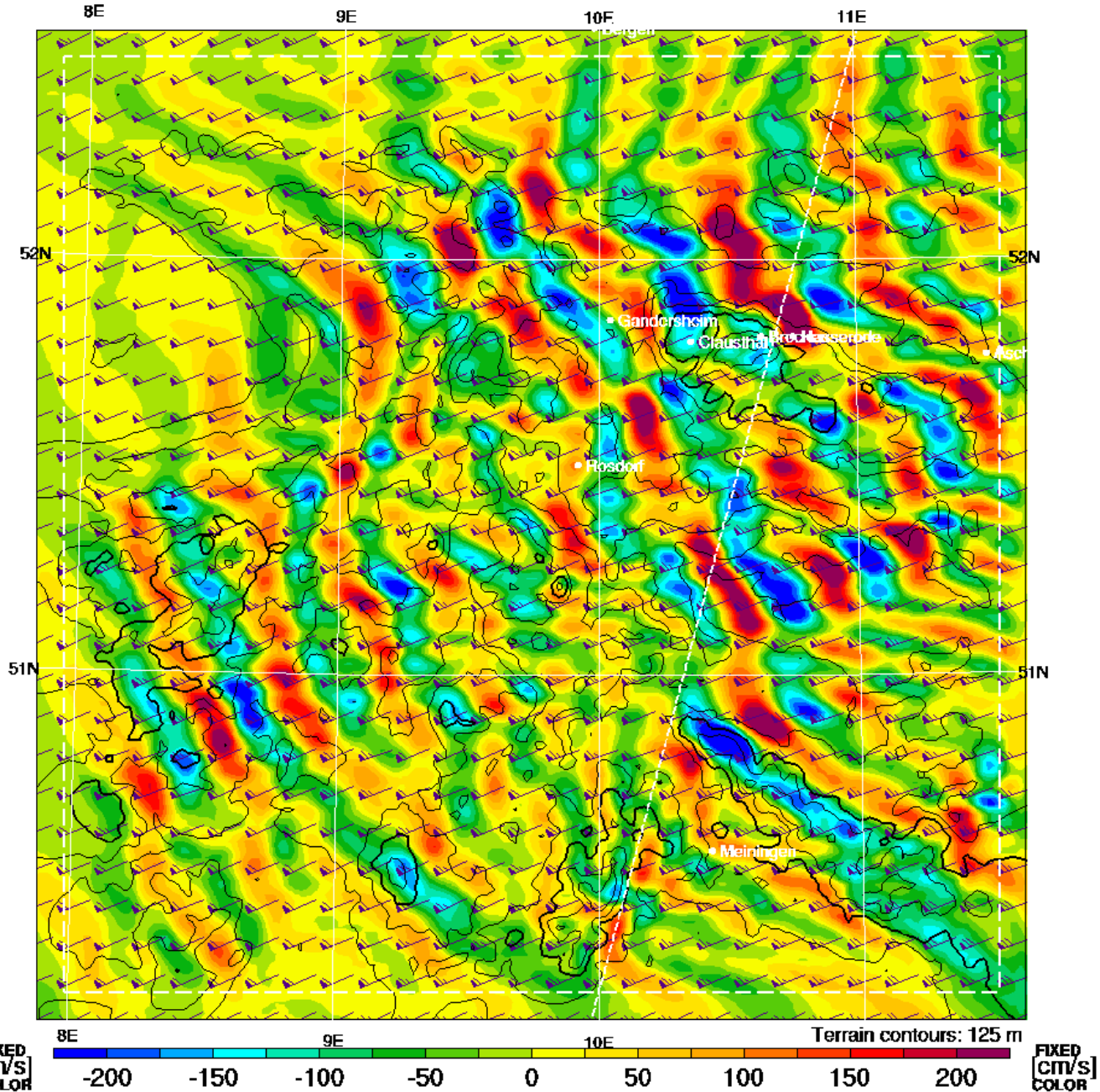
	s [km]	%Kurbel	N <sub>Aufwinde</sub>	R/C [m/s]	E	V <sub>d</sub> [km/h]
Leg1	14.04	33.52	8	2.02	-6.50	14.12
Leg2	50.40	8.26	11	1.98	36.63	14.42
Leg3	32.12	7.51	4	0.29	12.79	12.48

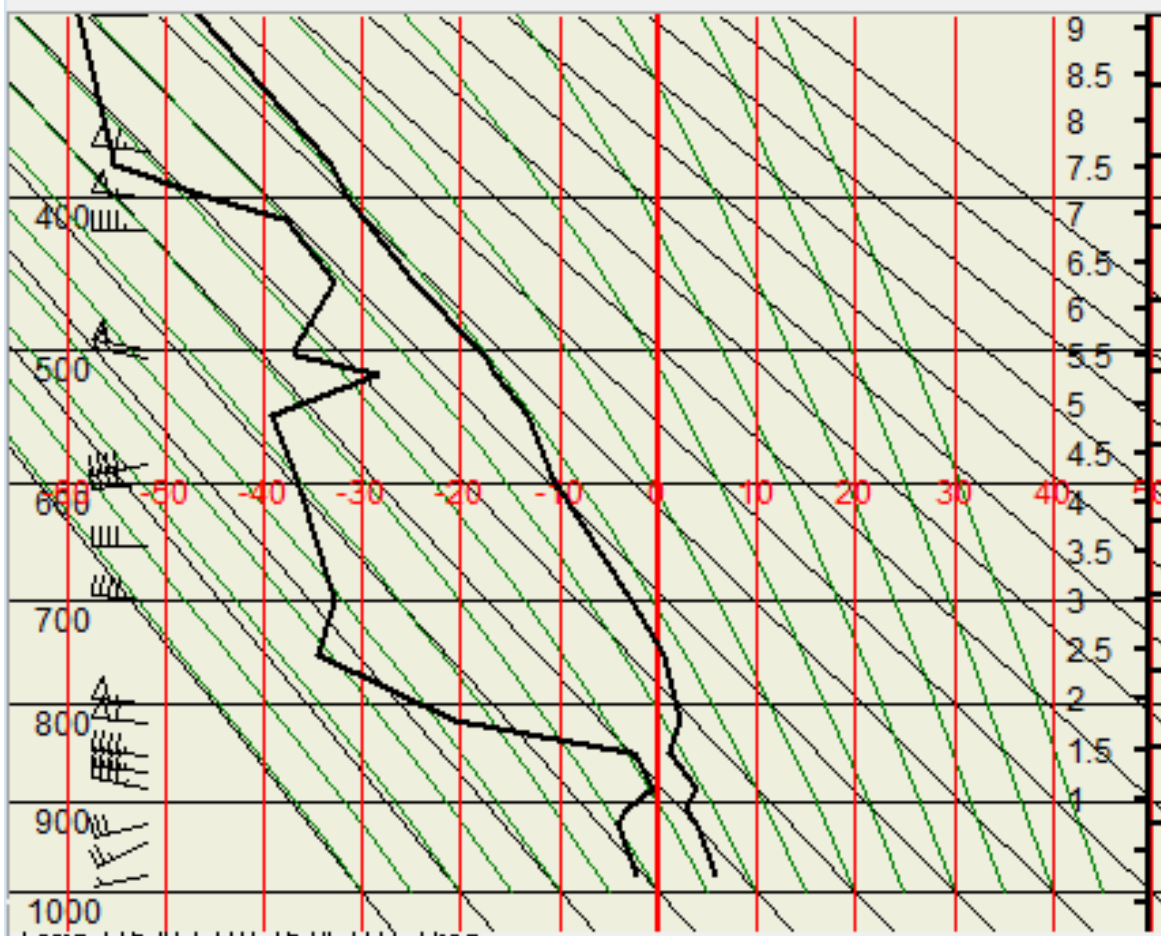




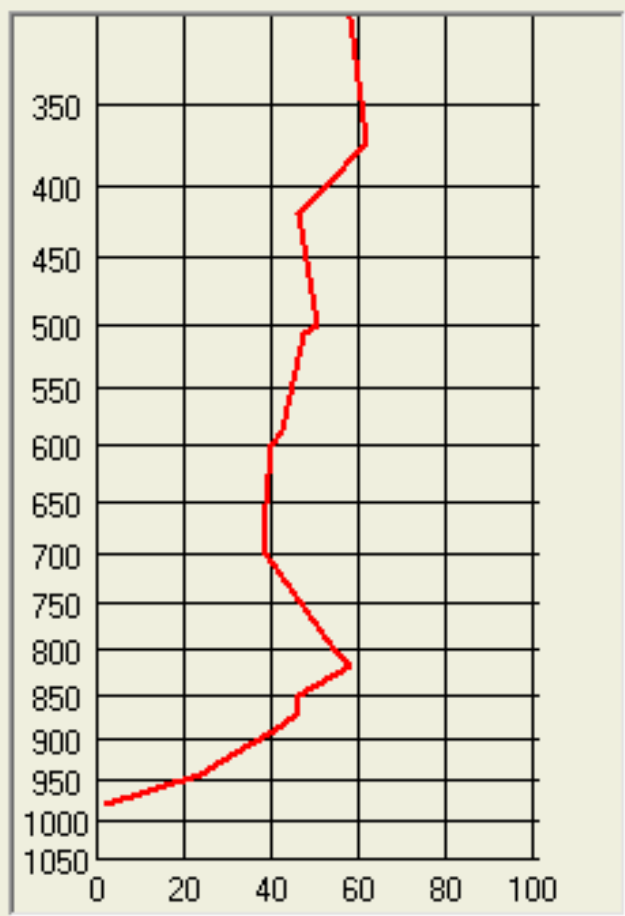
# Vertical Velocity & Wind [kt] at 701mb

Valid 1100 CET (1000Z) TUE 13 Jan 2015 [28hrFcst@1222z]  
slice X,Y= 139,135@15°





Temp 1152U 13.01.15 06 UTC Prag

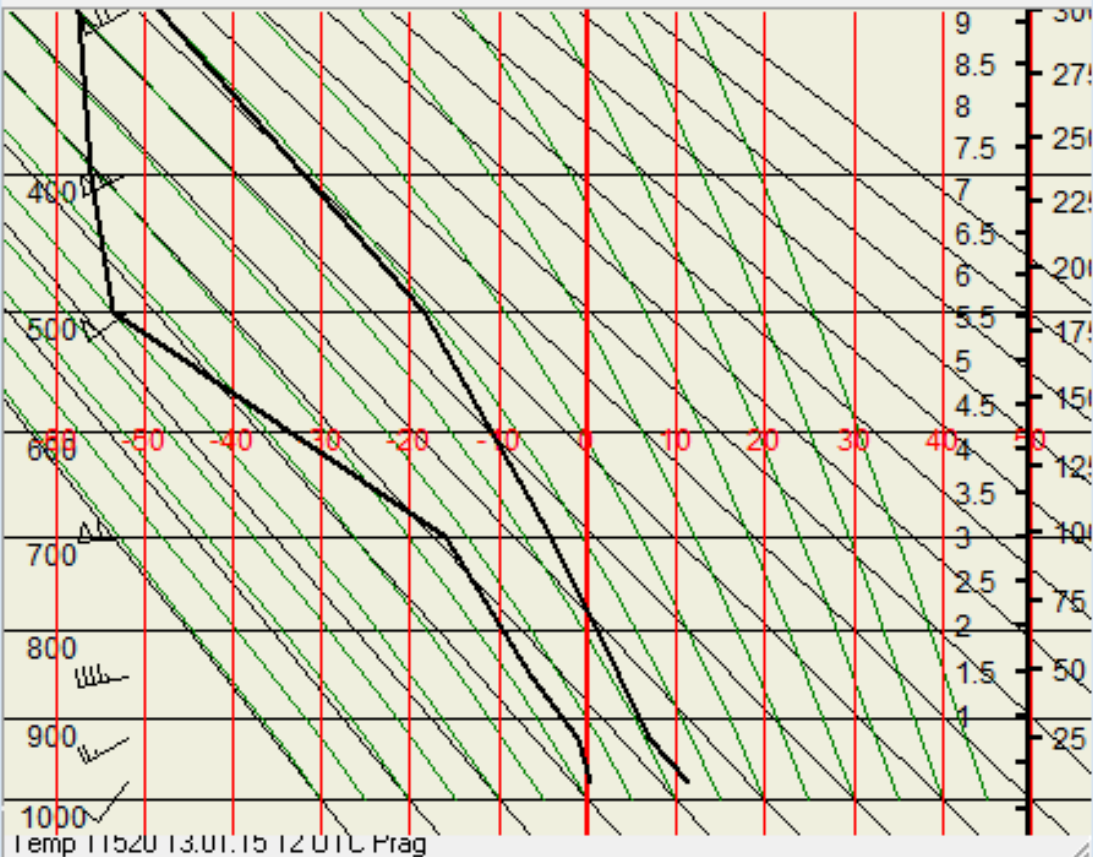
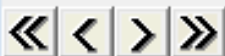


Profilart:

Element:

Profil:

TEMP - Diagramm

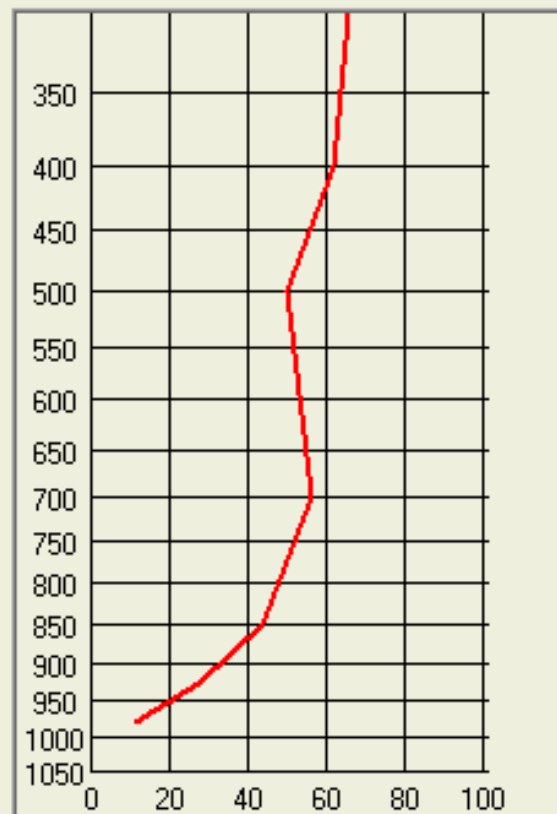


Gebiet

Deutschland

Auswertungen

Temp 11520 13.01.15 12 UTC Prag

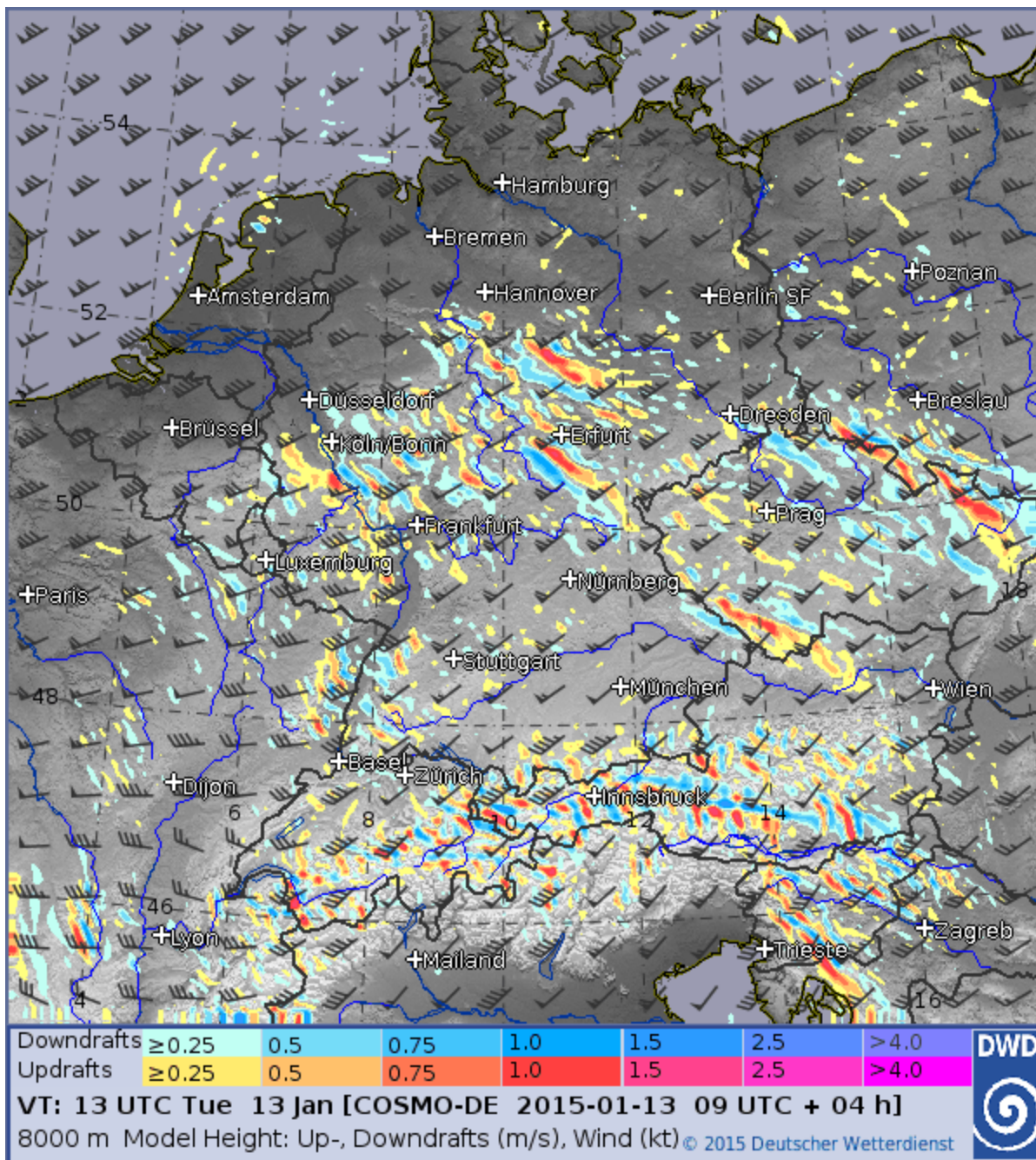


Profilart

Element Wind

Profil: Geschwindigkeit [kt]









13.1. 08:20

[www.aeroklubjesenik.cz](http://www.aeroklubjesenik.cz)

WWW.FCCBERLIN.DE 2015-01-13 CET 16:03:09





OLC-Plus OLC-League Destination

Standard Google-Maps

### Flugdetails

	Strecke	Dreieck
Punkte des Fluges:	314.17	
Wertungsdistanz:	282,70	31,47
Speed:	282,7 km	104,9 km
Wertungsdauer:	152,4 km/h	46,9 km/h
Wertungsklasse:	01:51:20	02:14:18
Wertungskategorie:	double	
Index:	100,0	
Club:	Soaring Society of Boulder	
Tag der Meldung:	04.02.2015 01:38:01	
Status:	IGC-Datei: <span style="color: green;">●</span>	Flug: <span style="color: red;">●</span>

### Flugweg

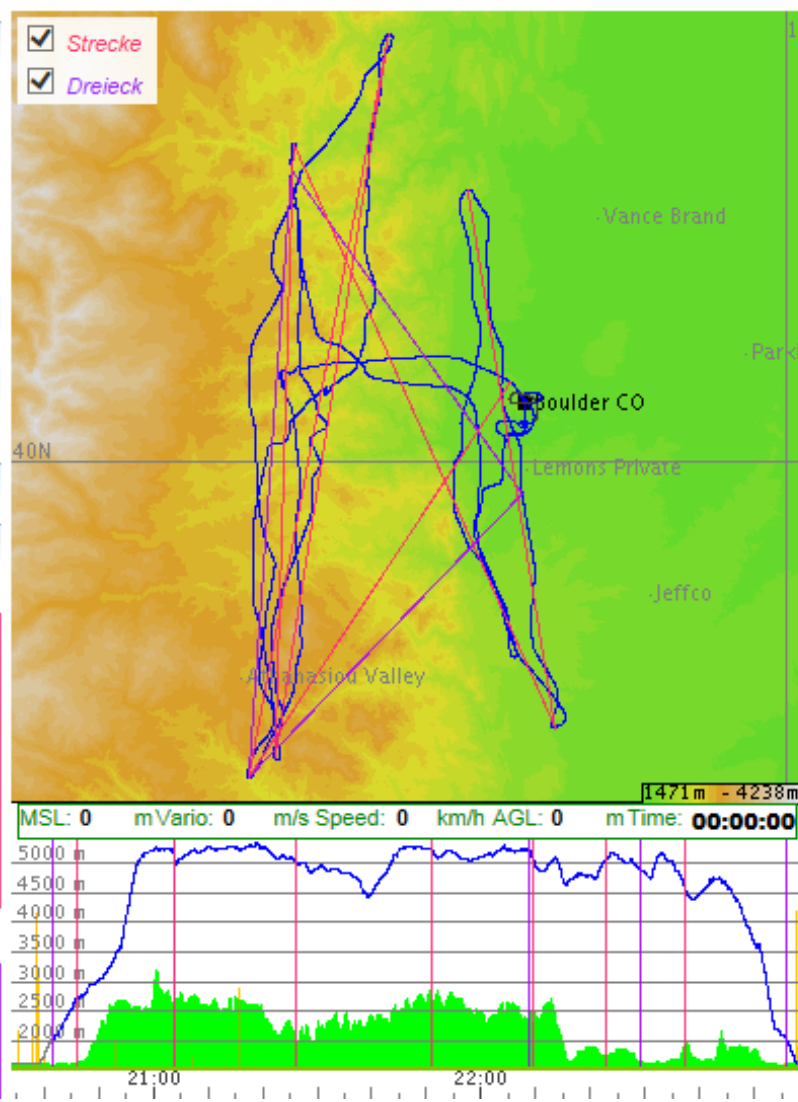
### Statistik

Strecke (OLC-Classic):

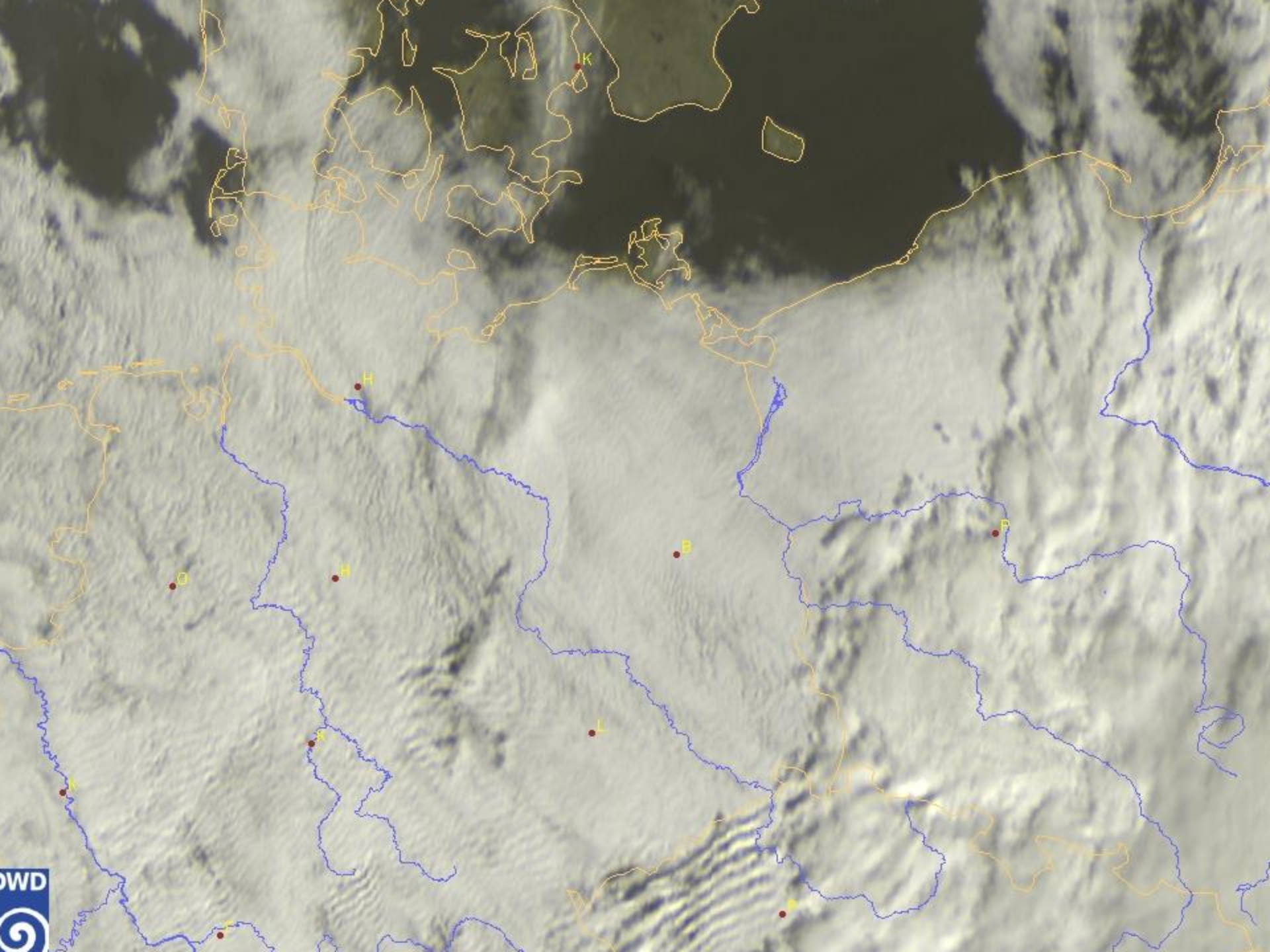
	s [km]	%Kurbel	N <sub>Aufwinde</sub>	R/C [m/s]	E	V <sub>d</sub> [km/h]
_leg1	35.47	7.47	1	8.04	-20.12	119.23
_leg2	56.90	0.00	0	0.00	462.56	152.17
_leg3	55.18	8.25	1	2.34	649.21	133.24
_leg4	46.35	0.00	0	0.00	345.93	151.16
_leg5	47.93	0.00	0	0.00	2282.20	215.94
_leg6	40.87	0.00	0	0.00	86.96	169.32
<b>Total</b>	<b>282.70</b>	<b>3.04</b>	<b>2</b>	<b>4.59</b>	<b>-303.98</b>	<b>152.35</b>

Dreieck (FAI-OLC):

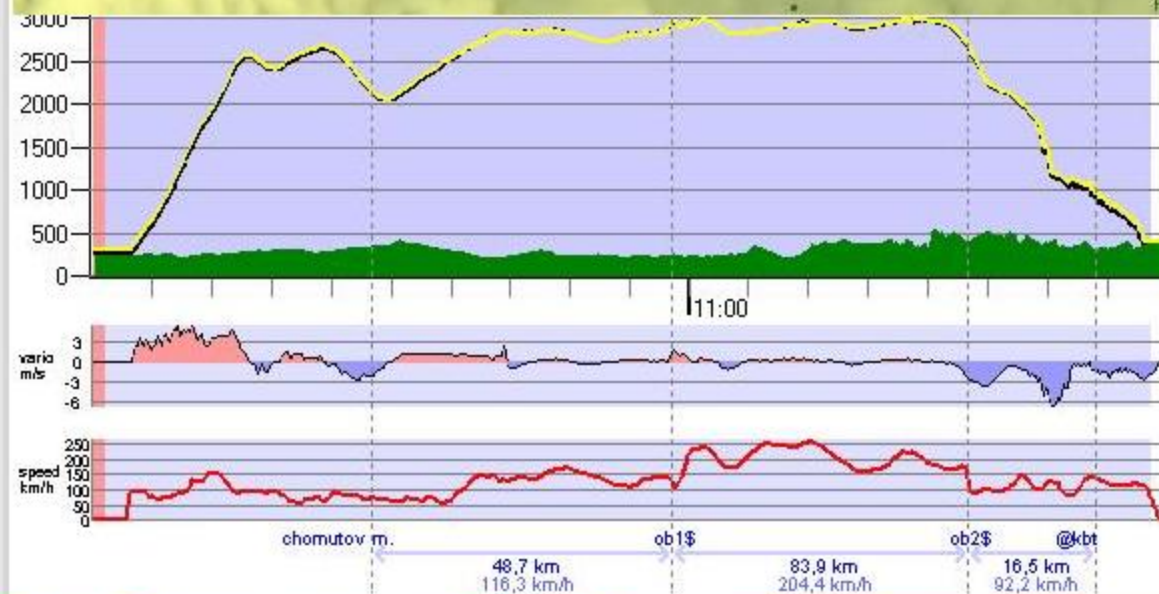
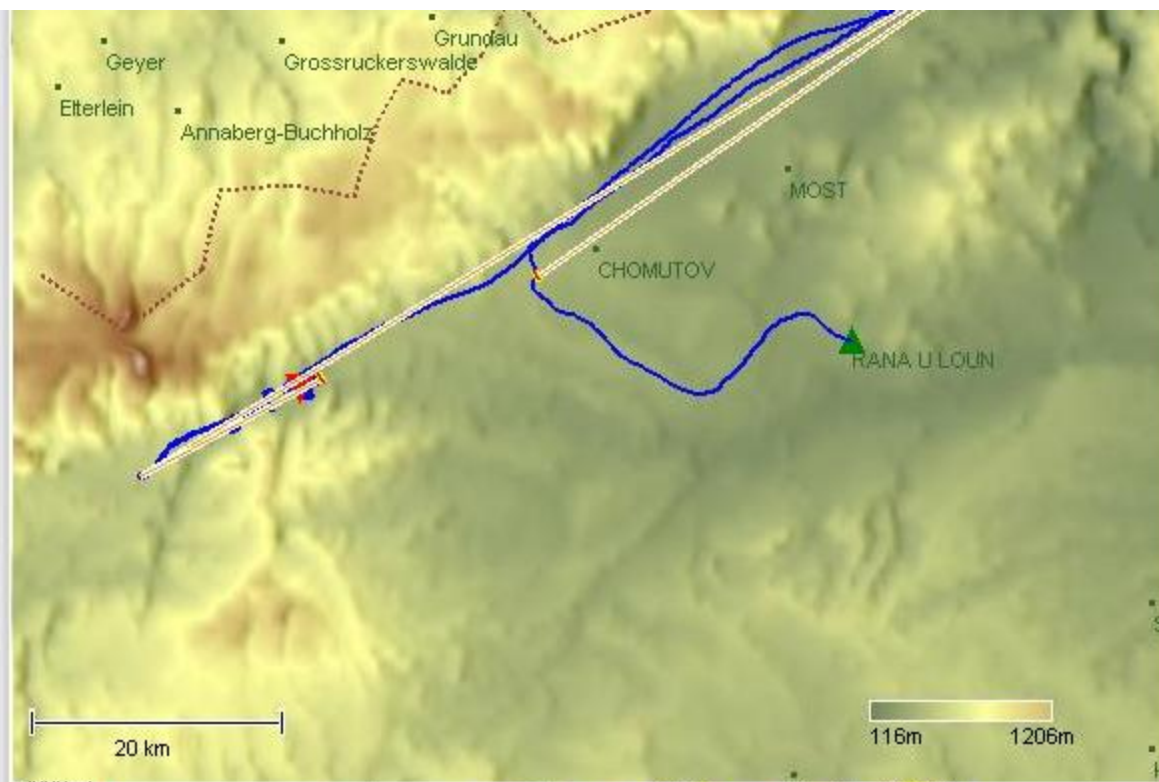
	s [km]	%Kurbel	N <sub>Aufwinde</sub>	R/C [m/s]	E	V <sub>d</sub> [km/h]
_leg1	34.11	5.97	1	8.04	-13.82	91.63
_leg2	45.77	3.16	1	2.34	226.58	42.35
_leg3	29.75	0.00	0	0.00	92.96	87.78












**149 km**  
**141.23 km/h**  
**185 b**

**tvar:** 20B  
**typ:** volný let na vzdálenost  
**záznam:** validní (homolog. FR)

**Komentáře k letu**

 **František Filandr:** To vypadá na sestup na brzdách ... Mraky? 😊

 **František Myška:** co let , to dobrodružství :-)... 😊

 **Tohle se líbí**

-  František Myška,  Tomáš Podolák,
-  Radovan Otto,
-  František Filandr a  Jan Pubec

Pro možnost hodnotit se přihlaste

**Fotografie z letu**



